

438+/- Acres of Waterfowl Hunting & Recreational Land  
in New Madrid County, MO  
BB Highway  
East Prairie, MO 63845

**\$1,861,500**  
438± Acres  
New Madrid County



**438+/- Acres of Waterfowl Hunting & Recreational Land in New Madrid County, MO**  
**East Prairie, MO / New Madrid County**

---

**SUMMARY**

**Address**

BB Highway

**City, State Zip**

East Prairie, MO 63845

**County**

New Madrid County

**Type**

Hunting Land, Recreational Land

**Latitude / Longitude**

36.690463 / -89.408271

**Acreage**

438

**Price**

\$1,861,500

**Property Website**

<https://www.mossyoakproperties.com/property/438-acres-of-waterfowl-hunting-recreational-land-in-new-madrid-county-mo-new-madrid-missouri/48079/>



**MORE INFO ONLINE:**

**MossyOakProperties.com**

## **438+/- Acres of Waterfowl Hunting & Recreational Land in New Madrid County, MO**

### **East Prairie, MO / New Madrid County**

---

#### **PROPERTY DESCRIPTION**

438 acres m/l of mixed use waterfowl hunting and recreational land for sale in New Madrid County, Missouri. Located 5 miles from Ten Mile Pond Conservation Area between East Prairie and New Madrid on Barnes Ridge just 8 miles off the Mississippi River. This region has become the hotbed for the Mississippi Flyway thanks to it's central proximity to a handful of National and State wildlife management areas as well as countless acres of dedicated habitat from private clubs and Mississippi backwater. Known as Greenhouse, this mixed-use tract has restored via WRE conservation easement and developed to provide a variety of habitat to migratory birds and waterfowl as well as upland game species and whitetail deer. Featuring 6 waterfowl impoundments with water control structures and irrigation well along the historic Black Bayou lowlands. Approx 11 acres of high ground has been left out of the easement along the blacktop to allow for building a home or lodge. Additional land available.

**MORE INFO ONLINE:**

**[MossyOakProperties.com](http://MossyOakProperties.com)**

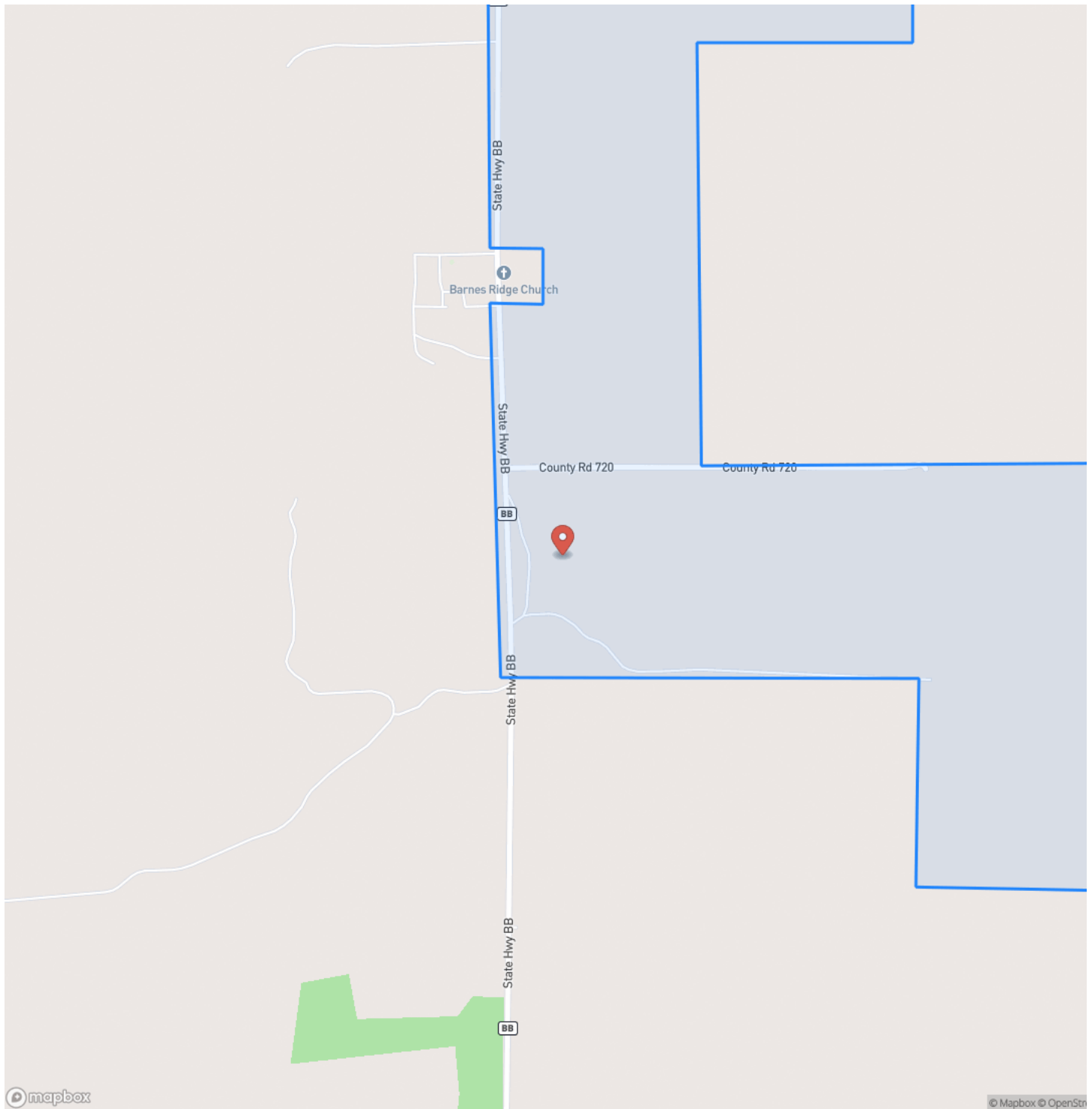


438+/- Acres of Waterfowl Hunting & Recreational Land in New Madrid County, MO  
East Prairie, MO / New Madrid County

---



## Locator Map

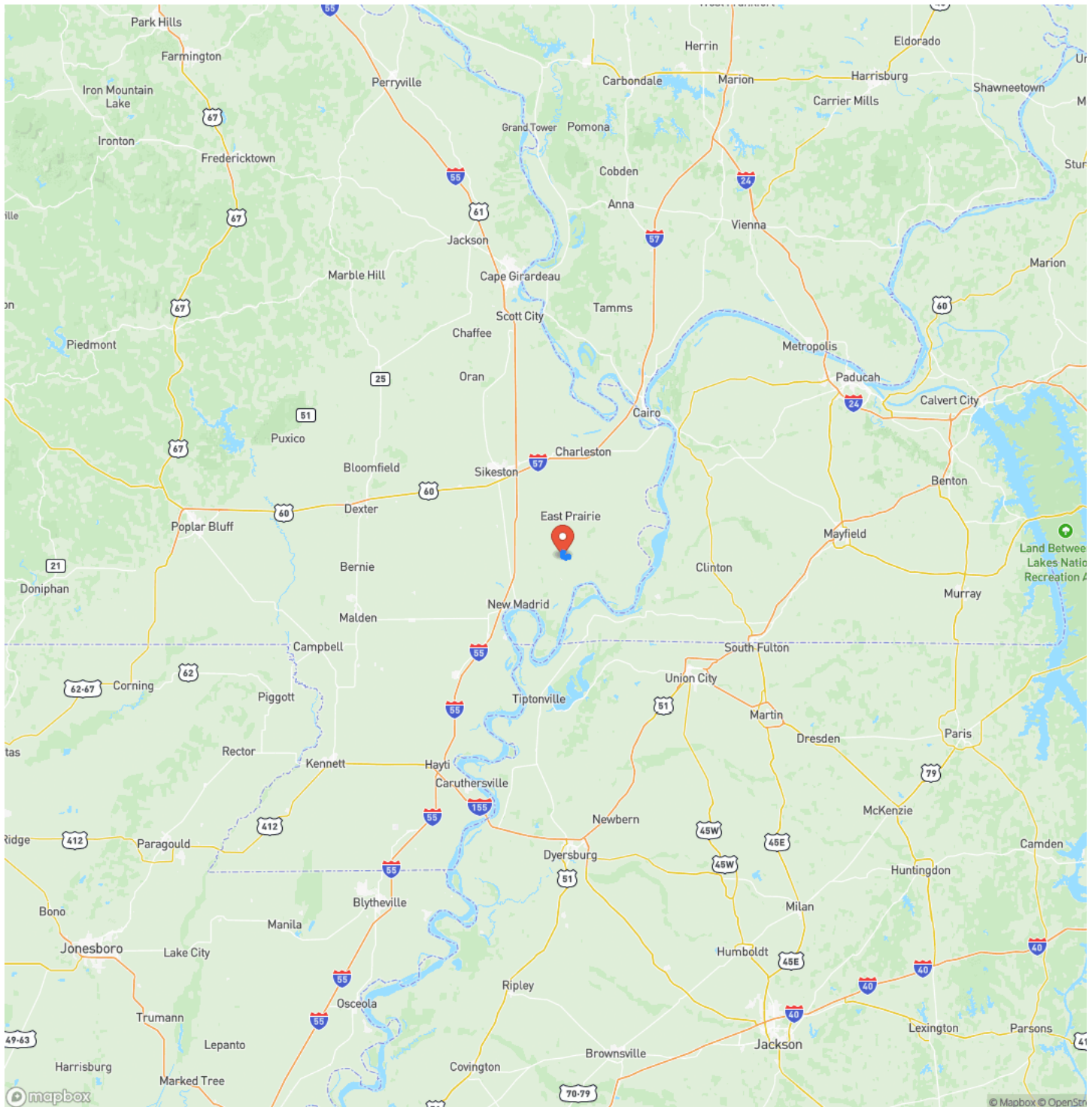




**438+/- Acres of Waterfowl Hunting & Recreational Land in New Madrid County, MO**  
**East Prairie, MO / New Madrid County**

---

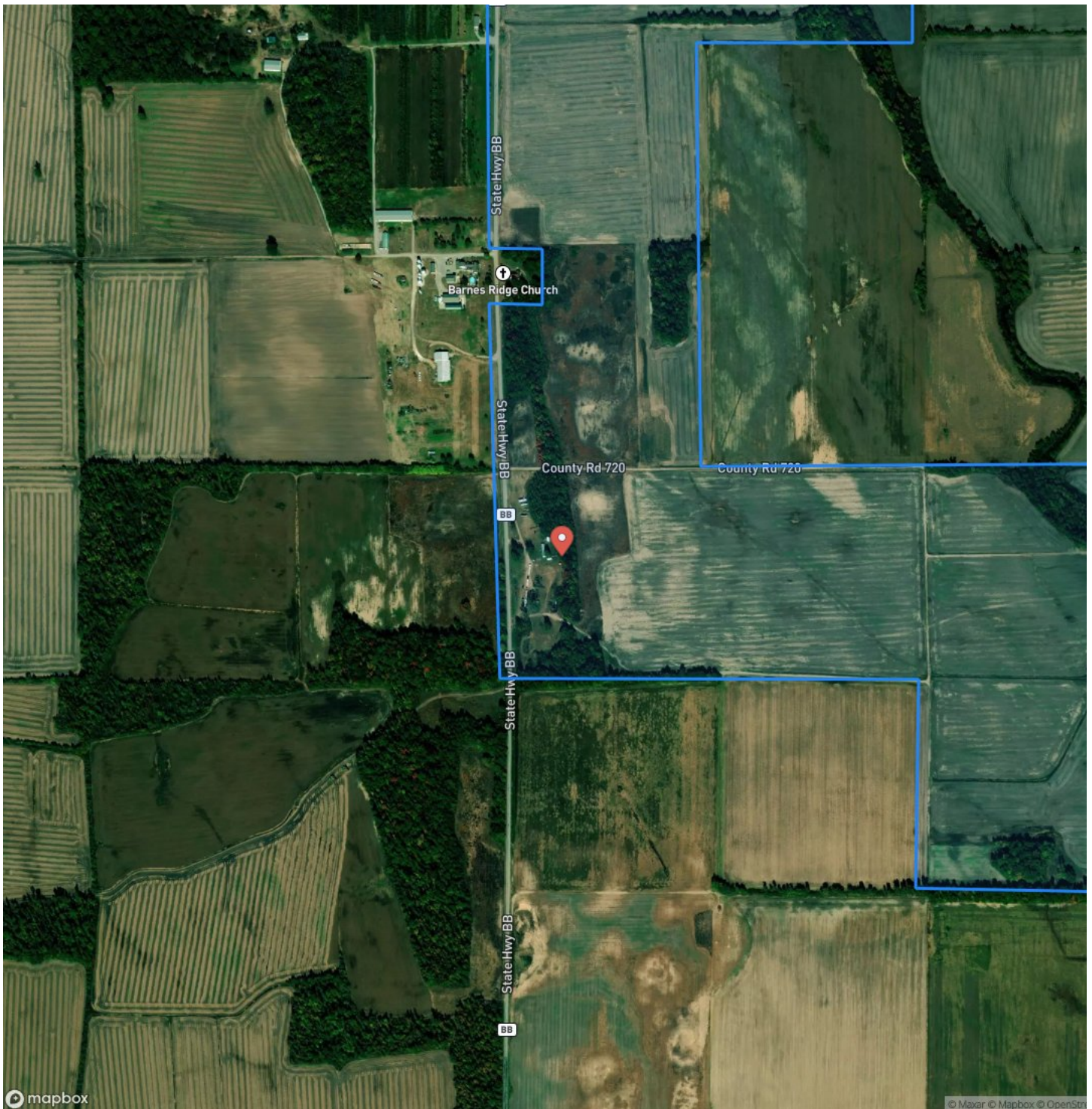
## Locator Map



**MORE INFO ONLINE:**

**[MossyOakProperties.com](http://MossyOakProperties.com)**

## Satellite Map



**MORE INFO ONLINE:**

**[MossyOakProperties.com](http://MossyOakProperties.com)**



**438+/- Acres of Waterfowl Hunting & Recreational Land in New Madrid County, MO  
East Prairie, MO / New Madrid County**

## LISTING REPRESENTATIVE

**For more information contact:**



### Representative

Lucas Edington

## Mobile

(573) 718-2800

## Office

(573) 712-2252

## Email

ledington@mossyoakproperties.com

**Address**

947 N. Westwood Blvd.

## City / State / Zip

Poplar Bluff, MO 63901

## NOTES



**MORE INFO ONLINE:**

**MossyOakProperties.com**



[illegible]

**MossyOakProperties.com**

## **DISCLAIMERS**

Information in this brochure is provided solely for information purposes and does not constitute an offer to sell or advertise real estate outside the states in which broker or agent licensed. The information presented has been obtained from sources deemed to be reliable, but is not guaranteed or warranted by the agent, broker, or the sellers of these properties. This offering is subject to errors, omissions, prior sale, price change, correction or withdrawal from the market without notice. All references to age, square footage, income, expenses, acreage, carrying capacity, and land classification, etc. are approximate. Prospective buyers are chargeable with and expected to conduct their own independent investigation of the information and the property and to rely only on those results. Sellers reserve the right to accept or reject any and all offers without liability to any buyer or cooperating broker.

Maps are provided for illustration purposes only, the accuracy is not warranted. Parcels on interactive maps are not adjusted to match aerial backgrounds. This information is for reference purposes only and is not a legal document. Data maps contain errors. The seller and seller's agent are making known to all potential buyers that there may be variations between the location of the existing fence lines and the legal description of the deeded property. Seller and seller's agent make no warranties with regard to the location of the fence lines in relationship to the deeded property lines, nor does the Seller make any warranties or representations with regard to the specific acreage contained within the fenced property lines. Seller is selling the property in an "as is" condition, which includes the location of the fences as they exist. Boundaries shown on the accompanying maps are approximate, based on county parcel data. The maps are not to scale. The accuracy of the maps is not guaranteed. Prospective buyers are encouraged to verify fence lines, deeded property lines and acreages using a licensed surveyor at their own expense.





---

**Mossy Oak Properties Mozark Realty**  
947 N. Westwood Blvd.  
Poplar Bluff, MO 63901  
(573) 712-2252  
[MossyOakProperties.com](http://MossyOakProperties.com)

---

