

16+/- Acres with Spacious Shop For Sale in Butler Co.
160 County Road 479
Poplar Bluff, MO 63901

\$159,900
16± Acres
Butler County



**16+/- Acres with Spacious Shop For Sale in Butler Co.
Poplar Bluff, MO / Butler County**

SUMMARY

Address

160 County Road 479

City, State Zip

Poplar Bluff, MO 63901

County

Butler County

Type

Residential Property, Single Family, Business Opportunity, Lot,
Recreational Land

Latitude / Longitude

36.702901 / -90.528595

Dwelling Square Feet

1500

Bedrooms / Bathrooms

3 / 2

Acreage

16

Price

\$159,900

Property Website

<https://www.mossyoakproperties.com/property/16-acres-with-spacious-shop-for-sale-in-butler-co-butler-missouri/76693/>



**16+/- Acres with Spacious Shop For Sale in Butler Co.
Poplar Bluff, MO / Butler County**

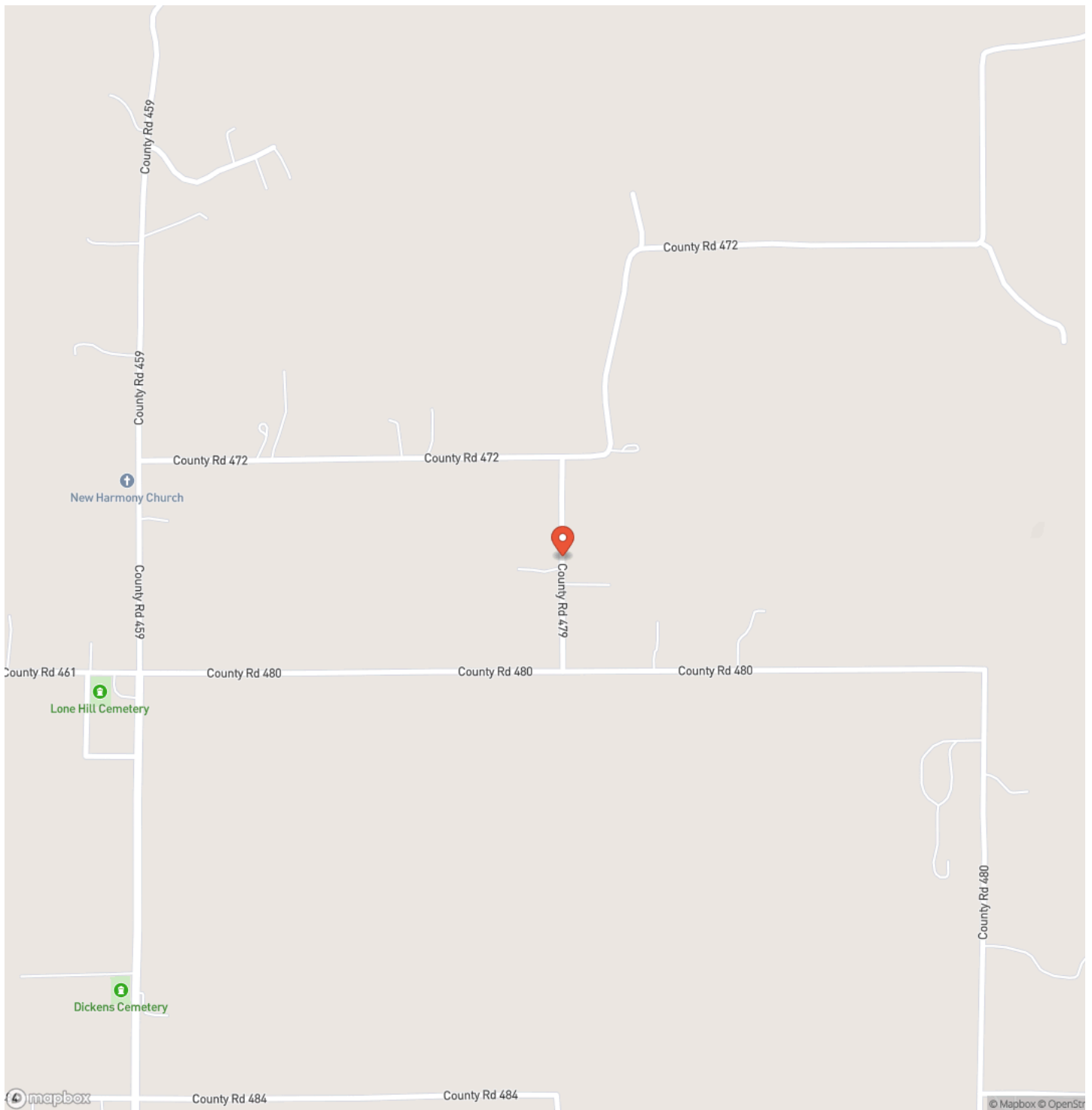
PROPERTY DESCRIPTION

PLEASE NOTE This structure was damaged after listing in the March storms. Some of the photos represent the structure prior to damage. Price has been reduced to reflect the change of status and will be selling **as-is** *** Over 16 acres of pasture with a gated gravel drive leading to a 1500 square foot shop / house. foundation. Property has several options for your future homestead, whether it be finishing out the current structure, adding on for the future, or even use of temporary living while you build your dream home on another portion of this beautiful property. It sits just South of Poplar Bluff, conveniently connected to several other large tracts of undeveloped land, making it a nice private location for anyone who wants the country living lifestyle, but still wanting to be close to town. Selling AS-IS

**16+/- Acres with Spacious Shop For Sale in Butler Co.
Poplar Bluff, MO / Butler County**

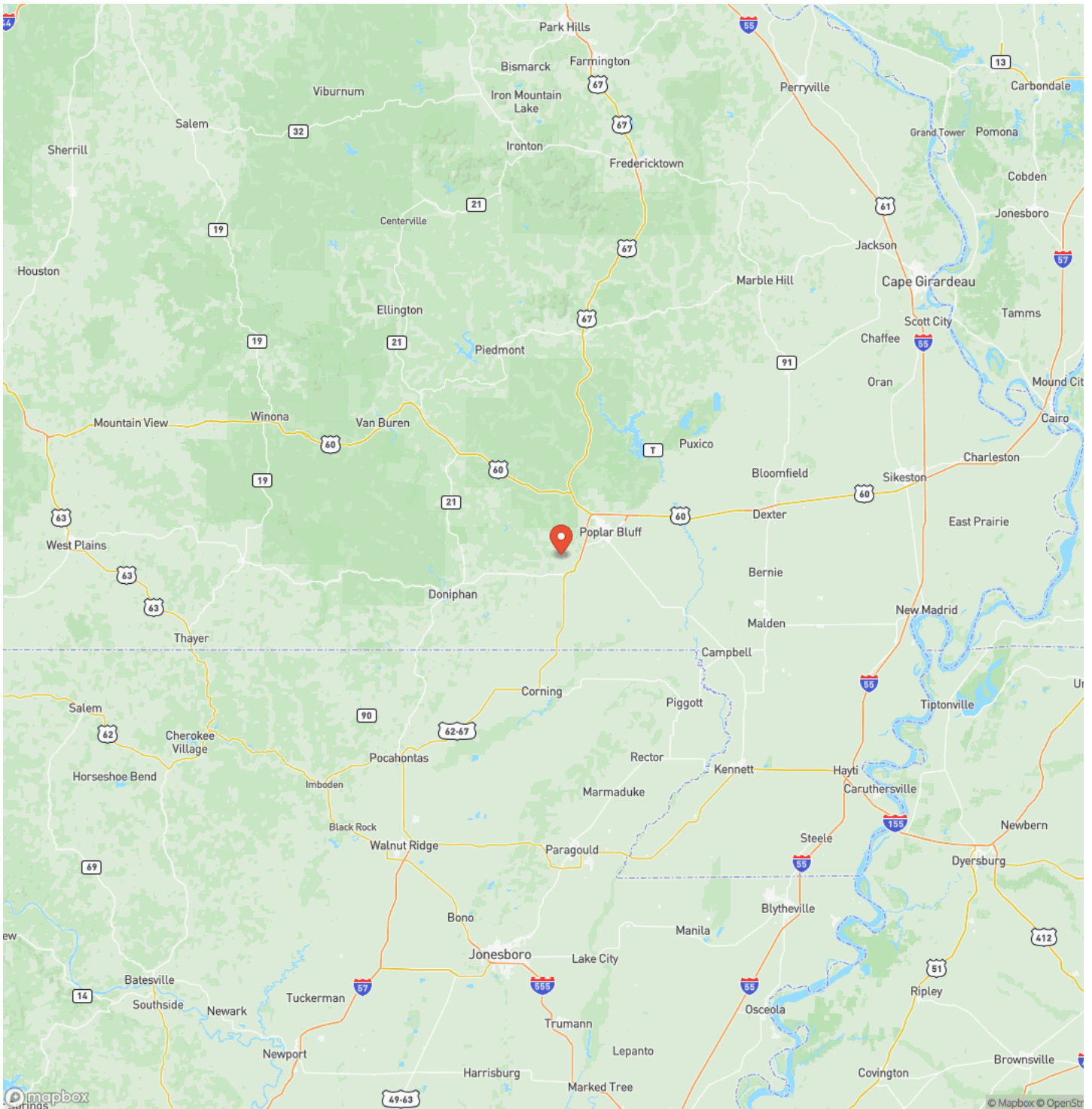


Locator Map



Poplar Bluff, MO / Butler County

Locator Map

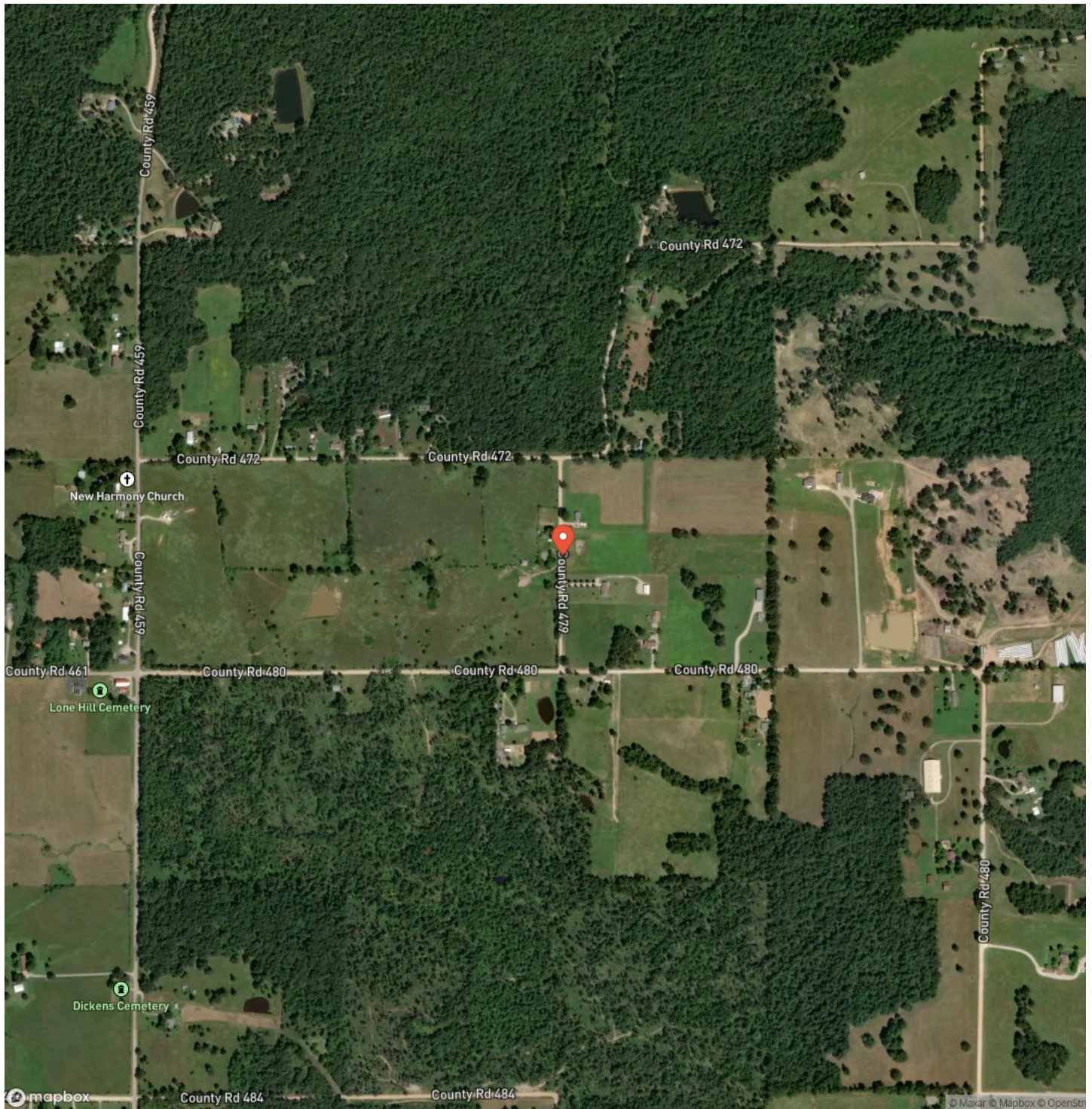


MORE INFO ONLINE:

MossyOakProperties.com

16+/- Acres with Spacious Shop For Sale in Butler Co.
Poplar Bluff, MO / Butler County

Satellite Map



16+/- Acres with Spacious Shop For Sale in Butler Co. Poplar Bluff, MO / Butler County

LISTING REPRESENTATIVE

For more information contact:



Representative

Lucas Edington

Mobile

(573) 718-2800

Office

(573) 712-2252

Email

ledington@mossyoakproperties.com

Address

947 N. Westwood Blvd.

City / State / Zip

NOTES

[illegible]

This image shows a single sheet of white paper with horizontal ruling lines. The lines are evenly spaced and run across the width of the page. There are no margins, text, or other markings on the paper.



MORE INFO ONLINE:
MossyOakProperties.com

DISCLAIMERS

Information in this brochure is provided solely for information purposes and does not constitute an offer to sell or advertise real estate outside the states in which broker or agent licensed. The information presented has been obtained from sources deemed to be reliable, but is not guaranteed or warranted by the agent, broker, or the sellers of these properties. This offering is subject to errors, omissions, prior sale, price change, correction or withdrawal from the market without notice. All references to age, square footage, income, expenses, acreage, carrying capacity, and land classification, etc. are approximate. Prospective buyers are chargeable with and expected to conduct their own independent investigation of the information and the property and to rely only on those results. Sellers reserve the right to accept or reject any and all offers without liability to any buyer or cooperating broker.

Maps are provided for illustration purposes only, the accuracy is not warranted. Parcels on interactive maps are not adjusted to match aerial backgrounds. This information is for reference purposes only and is not a legal document. Data maps contain errors. The seller and seller's agent are making known to all potential buyers that there may be variations between the location of the existing fence lines and the legal description of the deeded property. Seller and seller's agent make no warranties with regard to the location of the fence lines in relationship to the deeded property lines, nor does the Seller make any warranties or representations with regard to the specific acreage contained within the fenced property lines. Seller is selling the property in an "as is" condition, which includes the location of the fences as they exist. Boundaries shown on the accompanying maps are approximate, based on county parcel data. The maps are not to scale. The accuracy of the maps is not guaranteed. Prospective buyers are encouraged to verify fence lines, deeded property lines and acreages using a licensed surveyor at their own expense.

Mossy Oak Properties Mozark Realty
947 N. Westwood Blvd.
Poplar Bluff, MO 63901
(573) 712-2252
MossyOakProperties.com
