

79 ac+/- with Beautiful Brick Home  
6407 Ripley K-5  
Poplar Bluff, MO 63901

**\$399,000**  
79± Acres  
Butler County



**MORE INFO ONLINE:**

**[MossyOakProperties.com](http://MossyOakProperties.com)**





**79 ac+/- with Beautiful Brick Home**  
**Poplar Bluff, MO / Butler County**

---

**SUMMARY**

**Address**

6407 Ripley K-5

**City, State Zip**

Poplar Bluff, MO 63901

**County**

Butler County

**Type**

Residential Property, Recreational Land, Hunting Land, Farms, Single Family

**Latitude / Longitude**

36.761381 / -90.647746

**Dwelling Square Feet**

1600

**Bedrooms / Bathrooms**

3 / 2.5

**Acreage**

79

**Price**

\$399,000

**Property Website**

<https://www.mossyoakproperties.com/property/79-ac-with-beautiful-brick-home-butler-missouri/38495/>



**MORE INFO ONLINE:**

**MossyOakProperties.com**



**79 ac+/- with Beautiful Brick Home**  
**Poplar Bluff, MO / Butler County**

---

**PROPERTY DESCRIPTION**

Nice home and 79 +/- acres for sale less than 20 miles from Poplar Bluff in Ripley County, Missouri. Located on Ripley K-5 near the Butler County line, this 3 bedroom 2.5 bath home offers quiet seclusion nestled away in the Ozark hills. The open concept ranch home features ceilings and Andersen windows and doors providing natural lighting and views of the abundant wildlife throughout the grounds. This efficient all electric build has a large open living room equipped with electric fireplace and a nice covered and private rear deck. Attached car garage as well as a 40x30 equipment shed. Several hunting stands are scattered throughout the property that plays host to a variety native wildlife, including big whitetail deer and wild turkey. This unrestricted tract is perfect for that owner looking for an isolated feel without sacrificing the amenities of being near town.

**MORE INFO ONLINE:**

**[MossyOakProperties.com](http://MossyOakProperties.com)**



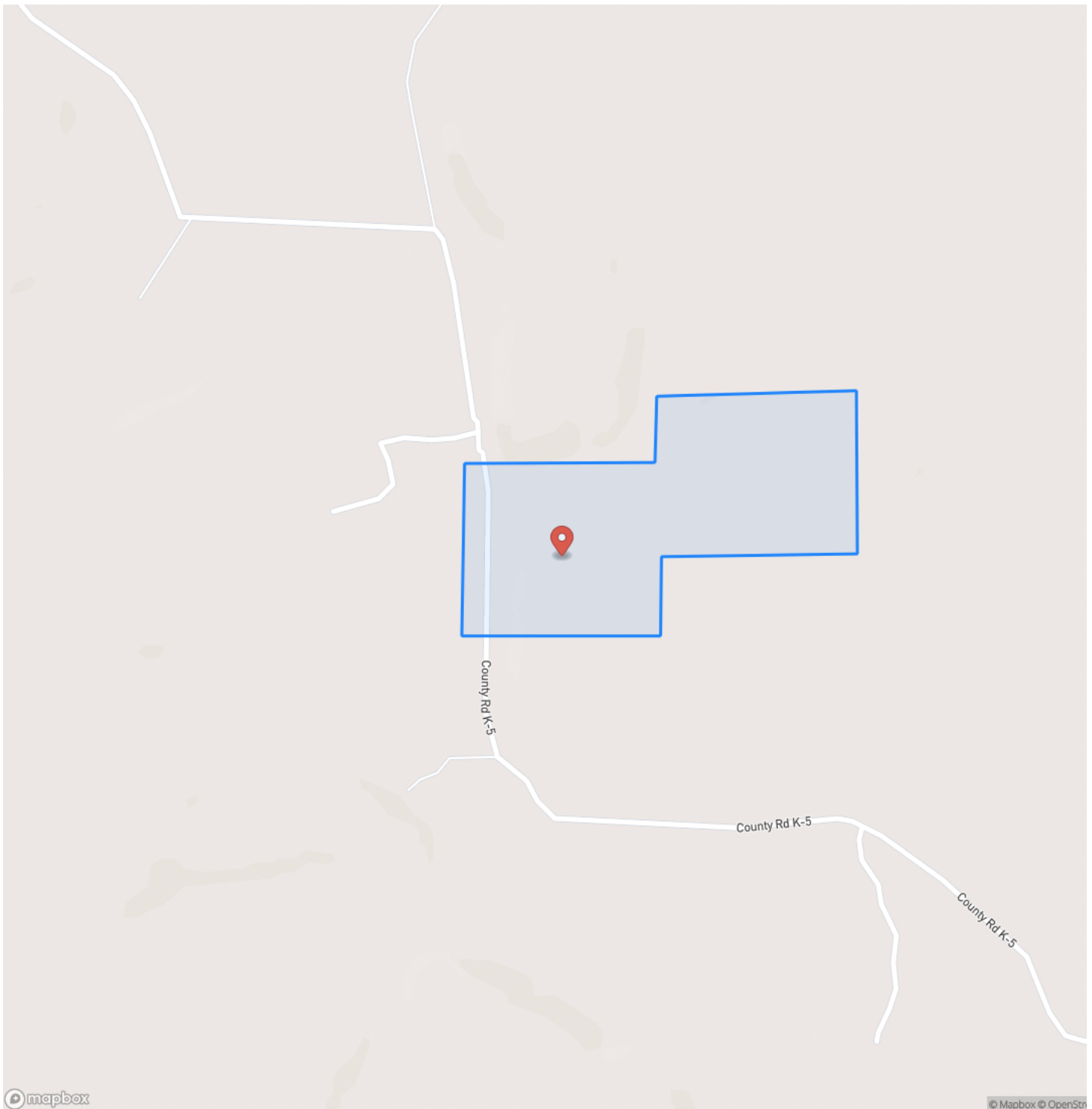
**79 ac+/- with Beautiful Brick Home**  
**Poplar Bluff, MO / Butler County**

---

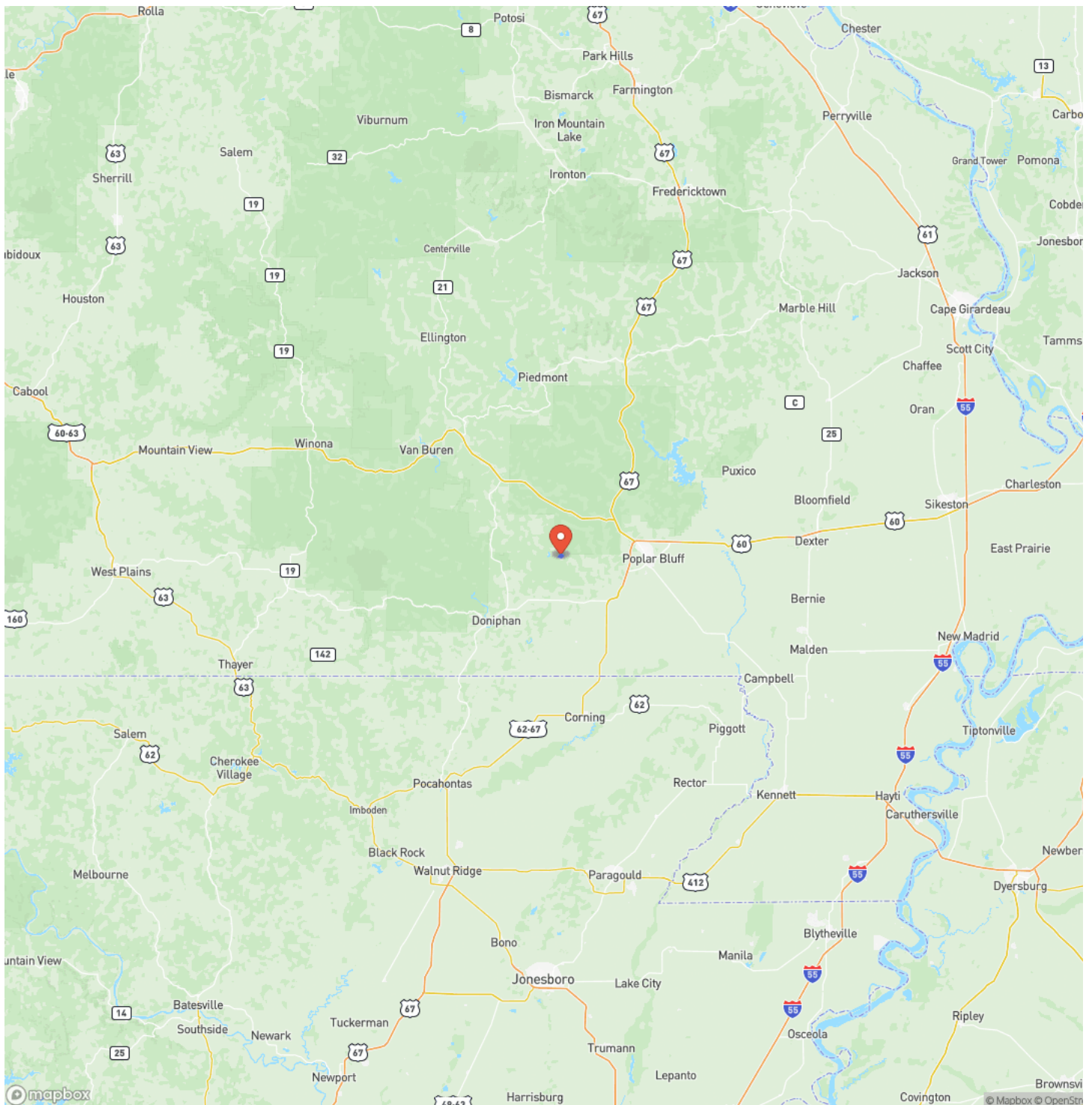




## Locator Map

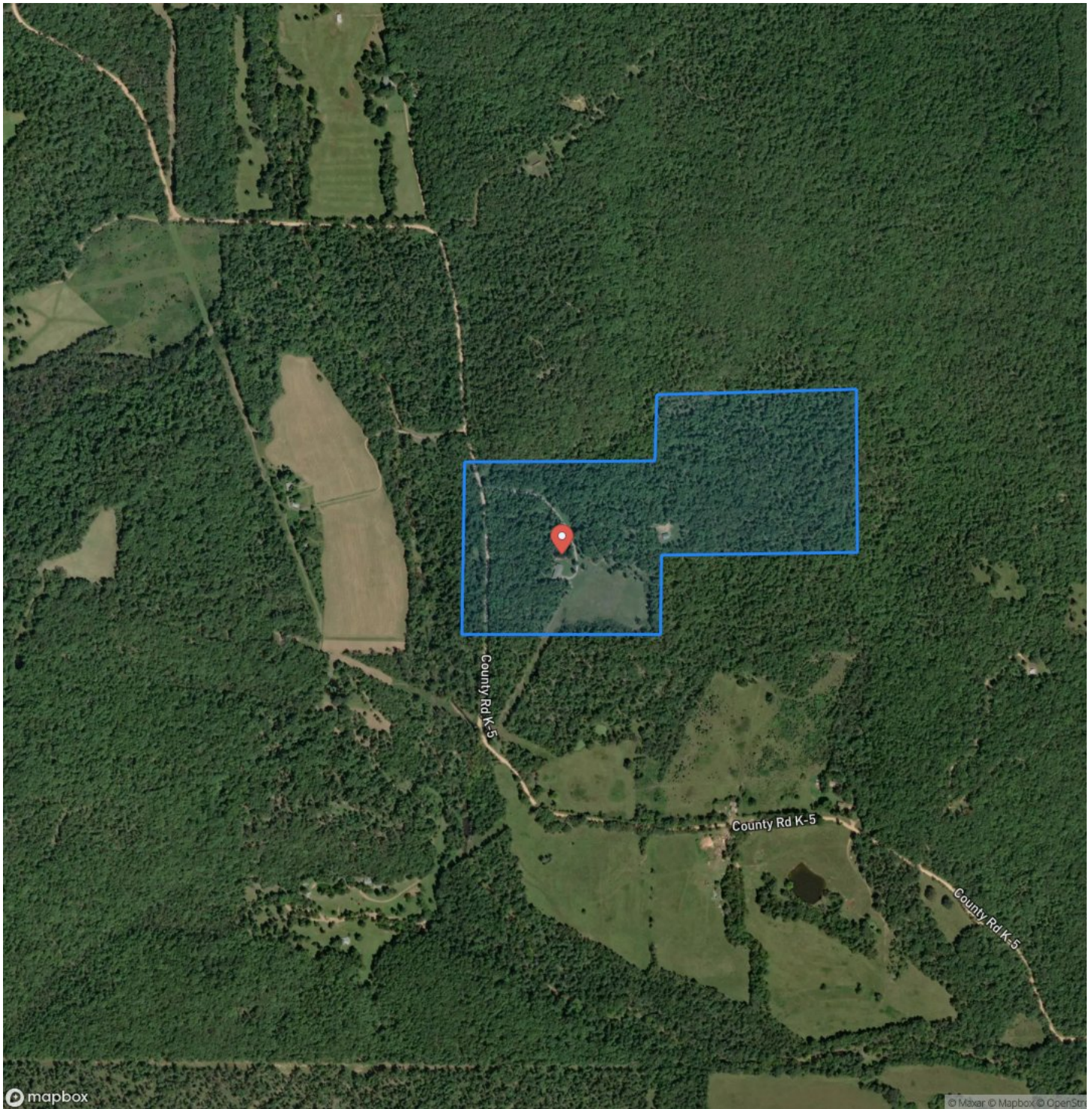


## Locator Map





## Satellite Map



## 79 ac+/- with Beautiful Brick Home Poplar Bluff, MO / Butler County

## LISTING REPRESENTATIVE

**For more information contact:**



### Representative

Lucas Edington

## Mobile

(573) 718-2800

## Office

(573) 712-2252

## Email

ledington@mossyoakproperties.com

**Address**

947 N. Westwood Blvd.

## City / State / Zip



Poplar Bluff, MO 63901

## NOTES



**MORE INFO ONLINE:**

**MossyOakProperties.com**



## This image shows a blank sheet of white paper with horizontal ruling lines. The lines are evenly spaced and run across the width of the page. There are no margins, text, or other markings on the paper.



## **DISCLAIMERS**

Information in this brochure is provided solely for information purposes and does not constitute an offer to sell or advertise real estate outside the states in which broker or agent licensed. The information presented has been obtained from sources deemed to be reliable, is not guaranteed or warranted by the agent, broker, or the sellers of these properties. This offering is subject to errors, omissions, prior sale, price change, correction or withdrawal from the market without notice. All references to age, square footage, income, expenses, acreage, carrying capacity, and land classification, etc. are approximate. Prospective buyers are chargeable with and expected to conduct their own independent investigation of the information and the property and to rely only on those results. Sellers reserve the right to accept or reject any and all offers without liability to any buyer or cooperating broker.

Maps are provided for illustration purposes only, the accuracy is not warranted. Parcels on interactive maps are not adjusted to match aerial backgrounds. This information is for reference purposes only and is not a legal document. Data maps contain errors. The seller and seller's agent are making known to all potential buyers that there may be variations between the location of the existing fence lines and the legal description of the deeded property. Seller and seller's agent make no warranties with regard to the location of the fence lines in relation to the deeded property lines, nor does the Seller make any warranties or representations with regard to the specific acreage contained within the fenced property lines. Seller is selling the property in an "as is" condition, which includes the location of the fences as they exist. Boundaries shown on the accompanying maps are approximate, based on county parcel data. The maps are not to scale. The accuracy of the maps is not guaranteed. Prospective buyers are encouraged to verify fence lines, deeded property lines and acreages using a licensed surveyor at their own expense.

**MORE INFO ONLINE:**

**[MossyOakProperties.com](http://MossyOakProperties.com)**





---

**Mossy Oak Properties Mozark Realty**  
947 N. Westwood Blvd.  
Poplar Bluff, MO 63901  
(573) 712-2252  
[MossyOakProperties.com](http://MossyOakProperties.com)

---

