

**385+/- Acres of Proven Hunting Ground For Sale in  
Ripley Co.  
1743 Ripley Route NN  
Doniphan, MO 63935**

**\$1,300,000**  
385± Acres  
Ripley County





**385+/- Acres of Proven Hunting Ground For Sale in Ripley Co.  
Doniphan, MO / Ripley County**

---

**SUMMARY**

**Address**

1743 Ripley Route NN

**City, State Zip**

Doniphan, MO 63935

**County**

Ripley County

**Type**

Farms, Hunting Land, Ranches, Recreational Land, Residential Property, Timberland, Single Family, Business Opportunity

**Latitude / Longitude**

36.770317 / -90.80344

**Dwelling Square Feet**

1200

**Bedrooms / Bathrooms**

3 / 2

**Acreage**

385

**Price**

\$1,300,000

**Property Website**

<https://www.mossyoakproperties.com/property/385-acres-of-proven-hunting-ground-for-sale-in-ripley-co-ripley-missouri/66922/>



## **385+/- Acres of Proven Hunting Ground For Sale in Ripley Co. Doniphan, MO / Ripley County**

---

### **PROPERTY DESCRIPTION**

385 acres of intensely managed and proven hunting for sale in Ripley County, Missouri -

Located just 15 minutes from Doniphan, MO, this remarkable 375 +/-acre property is a dream for hunters and nature lovers, offering a supreme outdoor experience against a backdrop of beautifully managed timber and professionally managed food plots. Premium whitetail deer, turkey, and other native wildlife are drawn to the property's numerous food plots, dense timber, and strategically placed hunting blinds and feeders. For the dedicated hunter, this land is exceptional, bordered directly by thousands of acres of Missouri Conservation Ground and surrounded by large landowners for added seclusion. Additionally, the property is only about a mile from tens of thousands of acres of National Forest lands, making it a uniquely expansive hunting and recreational opportunity.

The property's meticulously maintained roads and trails wind through the landscape, allowing for a comfortable and convenient adventure as you explore the grounds. After a day of tracking game, return to the fully equipped 3-bedroom, 1.75-bathroom cabin, which offers a cozy retreat for rest and relaxation. A spacious 30'x40' insulated shop provides the storage and workspace needed for gear and equipment, ensuring you are always prepared for any season.

Positioned near the scenic Current River and the Ozark National Scenic Riverways, the land's tranquil beauty provides endless opportunities for relaxation. With abundant wildlife, scenic surroundings, and a pristine, secluded ambiance, this property is a rare offering, delivering an unparalleled outdoor experience for those who appreciate both the hunt and the serenity of a true natural paradise.

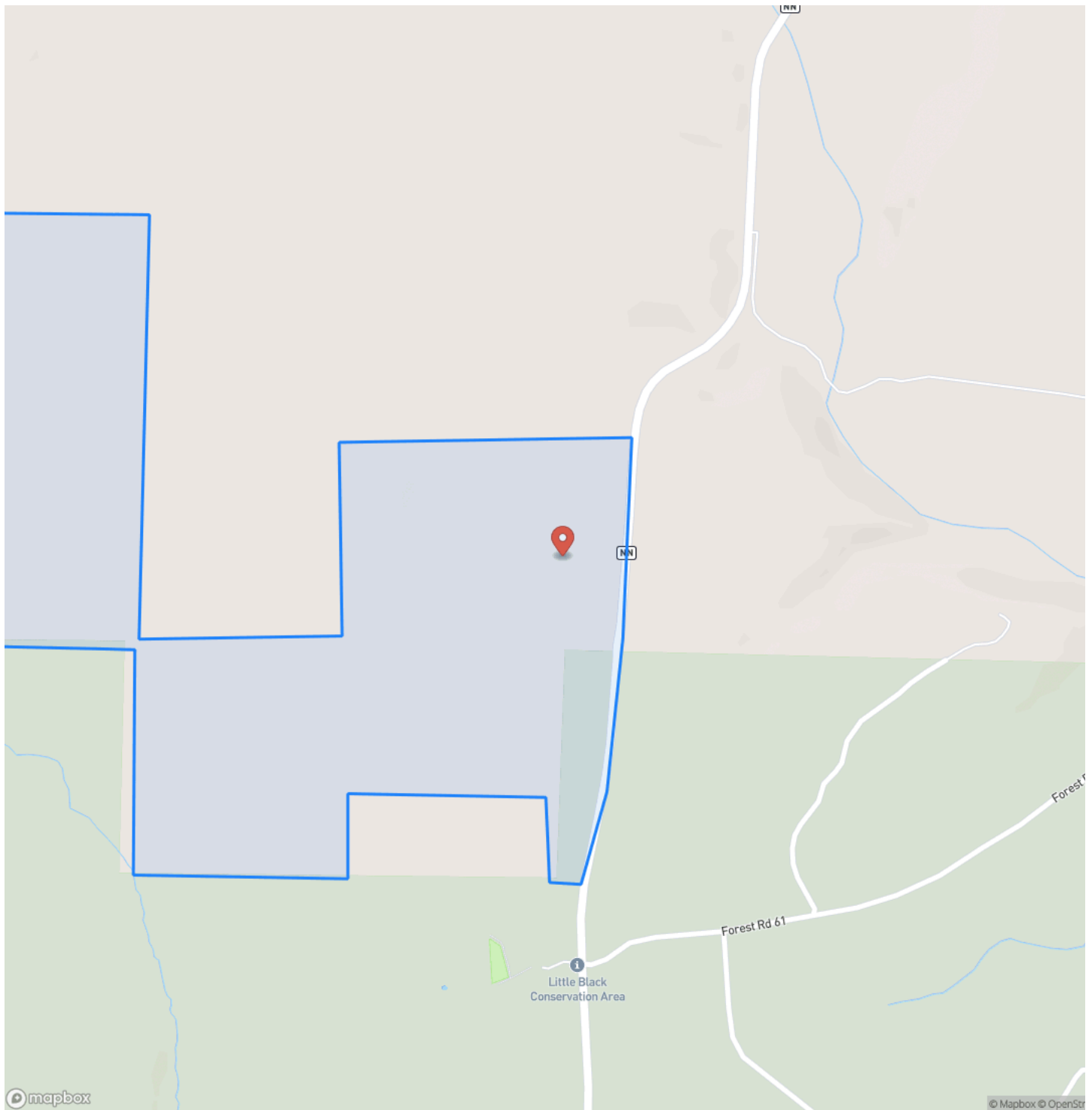
With easy accessibility from a paved road, this property is a rare find, blending convenience with a secluded ambiance. The landscape itself creates an inspiring backdrop for relaxation and rejuvenation. For the dedicated outdoor enthusiast, this property is more than a hunting ground; it's a retreat where every detail has been optimized to elevate your outdoor experience, making it the perfect escape for those who seek beauty, adventure, and tranquility all in one place.



385+/- Acres of Proven Hunting Ground For Sale in Ripley Co.  
Doniphan, MO / Ripley County



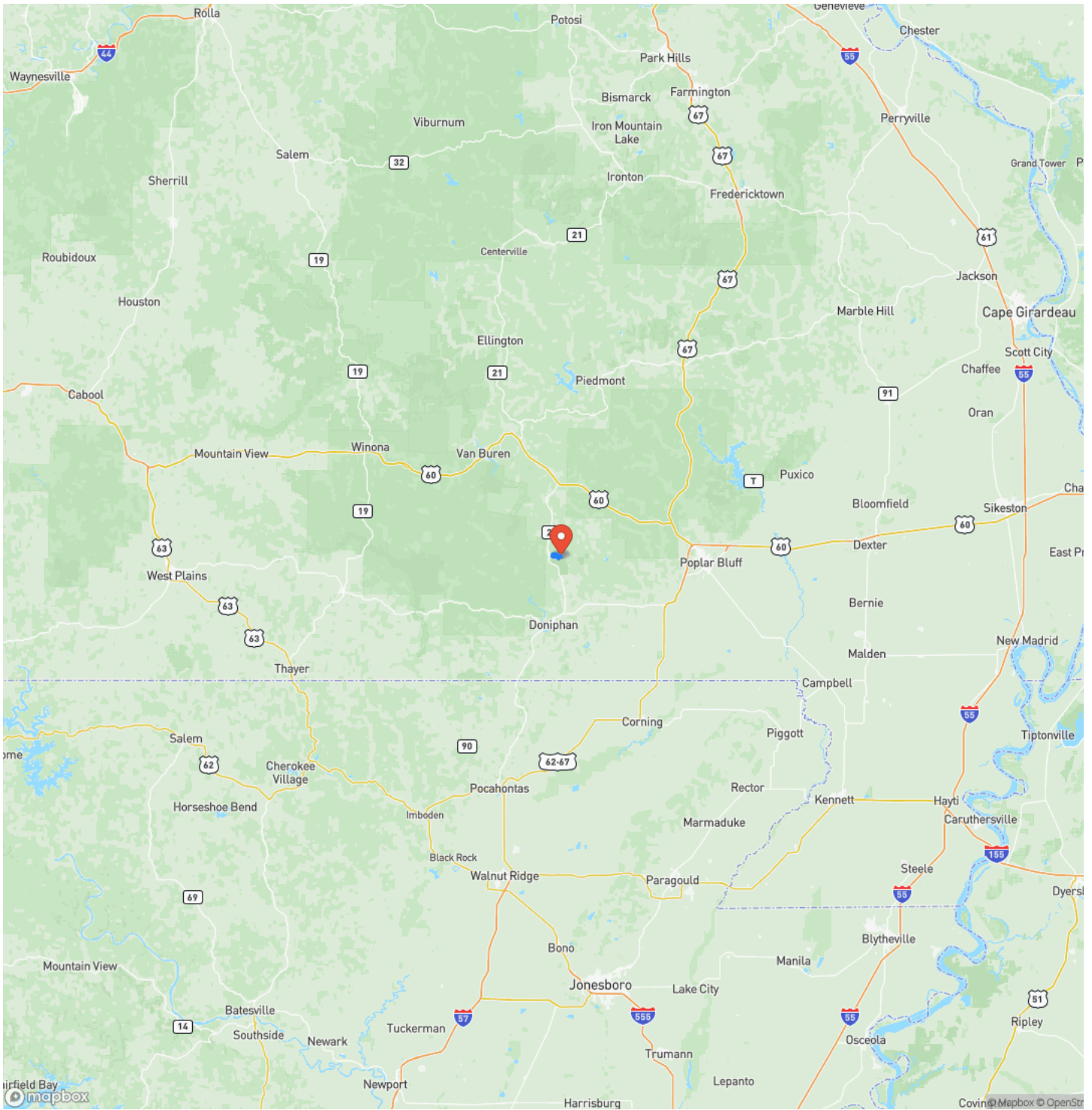
## Locator Map





## Doniphan, MO / Ripley County

## Locator Map

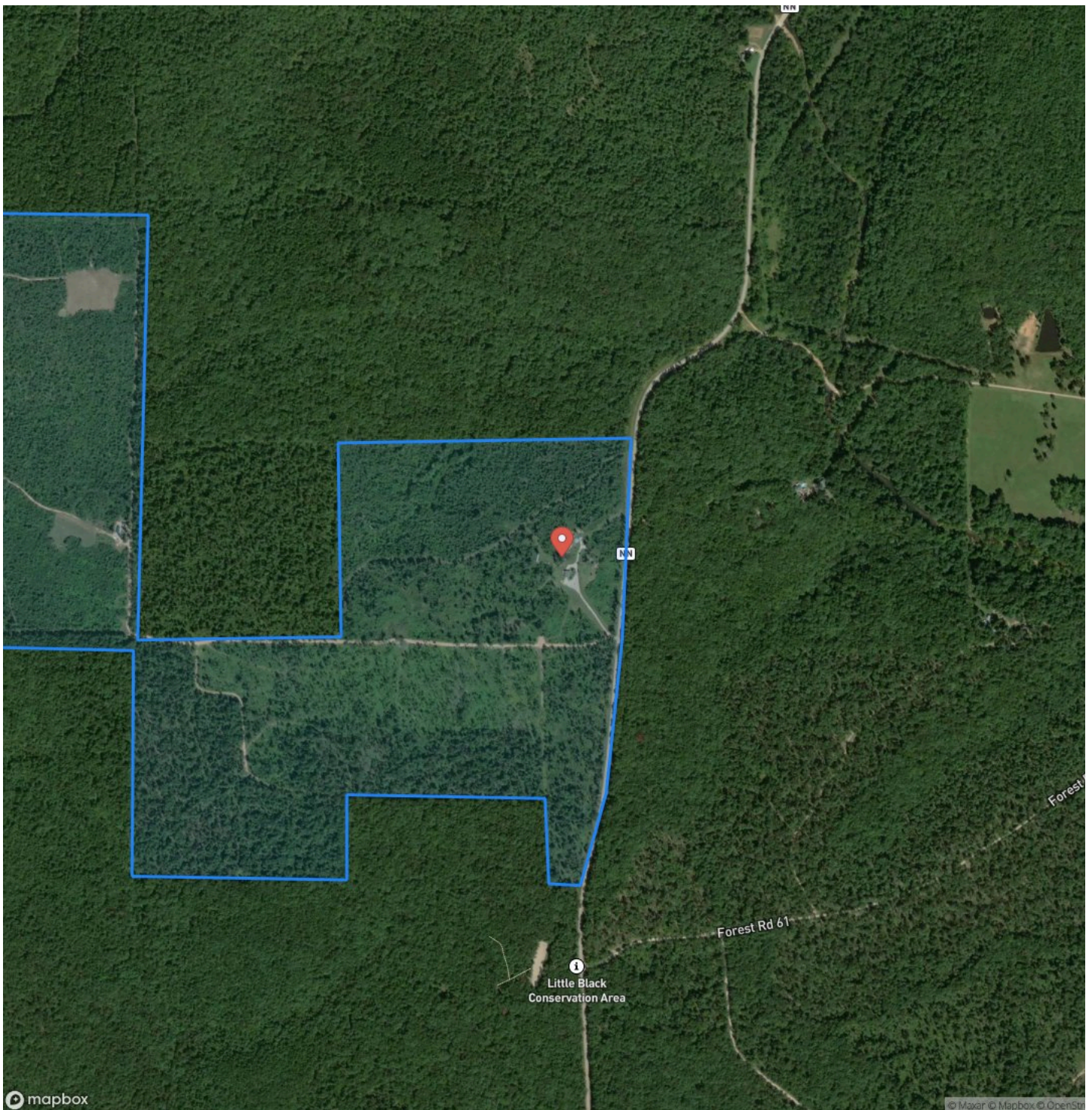




385+/- Acres of Proven Hunting Ground For Sale in Ripley Co.  
Doniphan, MO / Ripley County

---

## Satellite Map



385+/- Acres of Proven Hunting Ground For Sale in Ripley Co.  
Doniphan, MO / Ripley County

LISTING REPRESENTATIVE  
For more information contact:



**Representative**  
Lucas Edington  
**Mobile**  
(573) 718-2800  
**Office**  
(573) 712-2252  
**Email**  
ledington@mossyoakproperties.com  
**Address**  
947 N. Westwood Blvd.  
**City / State / Zip**

NOTES

Notes section with multiple horizontal lines for text entry.



## This image shows a single sheet of white paper with horizontal ruling lines. The lines are evenly spaced and run across the width of the page. There are no margins, text, or other markings on the paper.



**MORE INFO ONLINE:**  
**MossyOakProperties.com**

## **DISCLAIMERS**

Information in this brochure is provided solely for information purposes and does not constitute an offer to sell or advertise real estate outside the states in which broker or agent licensed. The information presented has been obtained from sources deemed to be reliable, but is not guaranteed or warranted by the agent, broker, or the sellers of these properties. This offering is subject to errors, omissions, prior sale, price change, correction or withdrawal from the market without notice. All references to age, square footage, income, expenses, acreage, carrying capacity, and land classification, etc. are approximate. Prospective buyers are chargeable with and expected to conduct their own independent investigation of the information and the property and to rely only on those results. Sellers reserve the right to accept or reject any and all offers without liability to any buyer or cooperating broker.

Maps are provided for illustration purposes only, the accuracy is not warranted. Parcels on interactive maps are not adjusted to match aerial backgrounds. This information is for reference purposes only and is not a legal document. Data maps contain errors. The seller and seller's agent are making known to all potential buyers that there may be variations between the location of the existing fence lines and the legal description of the deeded property. Seller and seller's agent make no warranties with regard to the location of the fence lines in relationship to the deeded property lines, nor does the Seller make any warranties or representations with regard to the specific acreage contained within the fenced property lines. Seller is selling the property in an "as is" condition, which includes the location of the fences as they exist. Boundaries shown on the accompanying maps are approximate, based on county parcel data. The maps are not to scale. The accuracy of the maps is not guaranteed. Prospective buyers are encouraged to verify fence lines, deeded property lines and acreages using a licensed surveyor at their own expense.



---

**Mossy Oak Properties Mozark Realty**  
947 N. Westwood Blvd.  
Poplar Bluff, MO 63901  
(573) 712-2252  
[MossyOakProperties.com](http://MossyOakProperties.com)

---