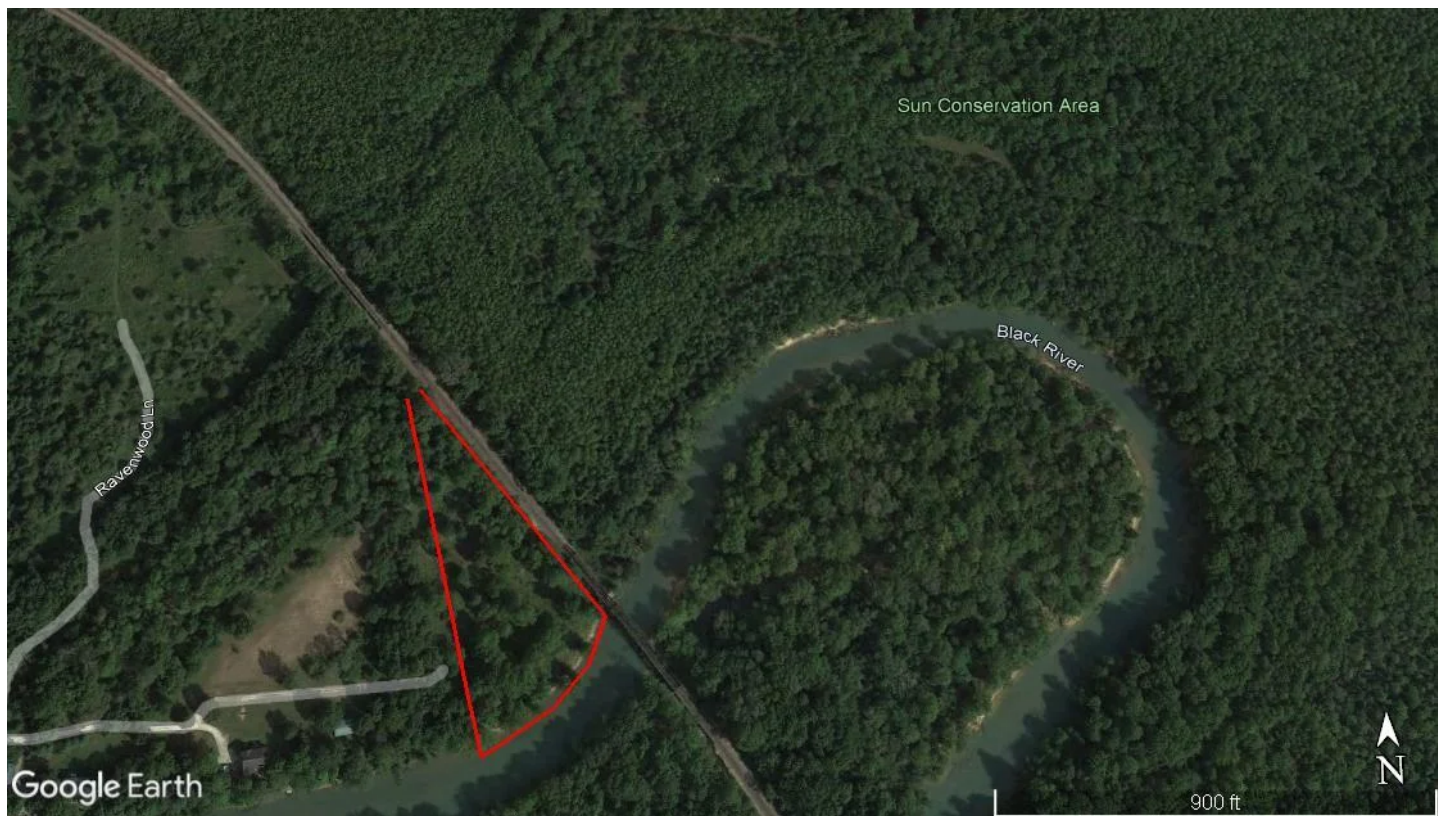


**Riverfront Lot For Sale in Butler County,
Poplar Bluff, Missouri**
Ravenwood Lane
Poplar Bluff, MO 63901

\$70,000
3.990 +/- acres
Butler County



Riverfront Lot For Sale in Butler County, Poplar Bluff, Missouri

Poplar Bluff, MO / Butler County

SUMMARY

Address

Ravenwood Lane

City, State Zip

Poplar Bluff, MO 63901

County

Butler County

Type

Undeveloped Land, Lot, Single Family, Recreational Land

Latitude / Longitude

36.807223 / -90.396190

Taxes (Annually)

90

HOA (Annually)

100

Acreage

3.990

Price

\$70,000

Property Website

<https://www.mossyoakproperties.com/property/riverfront-lot-for-sale-in-butler-county-poplar-bluff-missouri-butler-missouri/24548/>



MORE INFO ONLINE:

MossyOakProperties.com

Riverfront Lot For Sale in Butler County, Poplar Bluff, Missouri

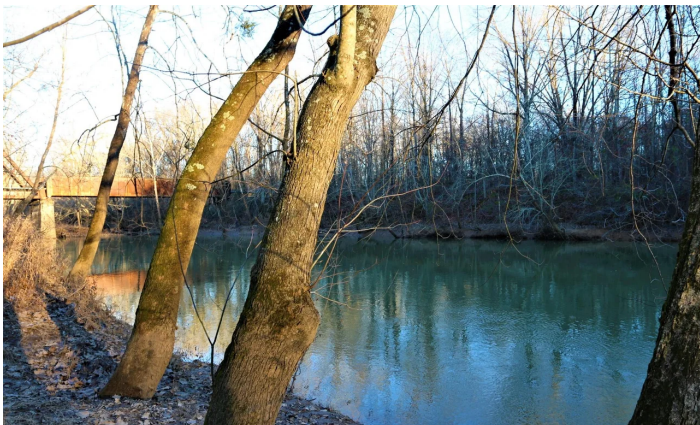
Poplar Bluff, MO / Butler County

PROPERTY DESCRIPTION

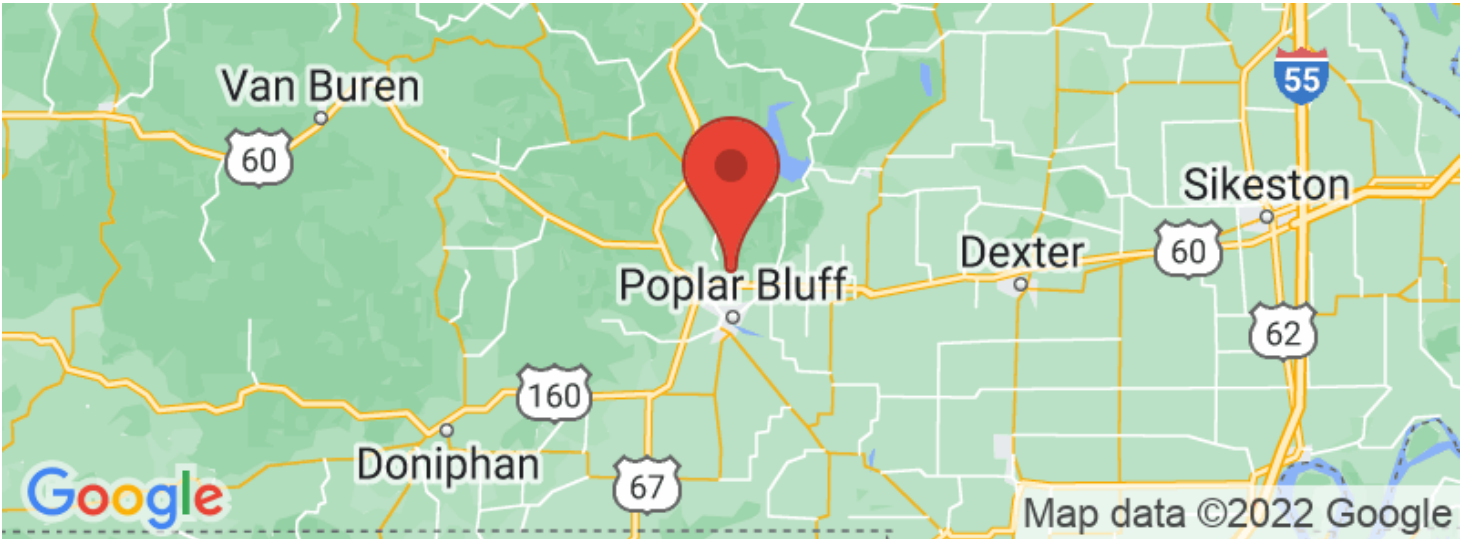
Riverfront land for sale in Butler County, Missouri - Located just off W Highway at the very end of Ravenwood Lane, this nearly 4 acre parcel joins several hundred acres of State Conservation Lands and features approx 400 ft of Black River frontage. Enjoy end of the road privacy and a nice sand bar along the water's edge. This mostly level tract has underground electricity installed to the gate, and is only moderately restricted. Waterfront land is getting harder and harder to find. Modular homes allowed, 1500 sq ft minimum. \$100 annual road maintenance fee.



Riverfront Lot For Sale in Butler County, Poplar Bluff, Missouri
Poplar Bluff, MO / Butler County



Locator Maps



Aerial Maps



Riverfront Lot For Sale in Butler County, Poplar Bluff, Missouri
Poplar Bluff, MO / Butler County

LISTING REPRESENTATIVE

For more information contact:



Representative

Lucas Edington

Mobile

(573) 718-2800

Office

(573) 712-2252

Email

ledington@mossyoakproperties.com

Address

947 N. Westwood Blvd.

City / State / Zip

Poplar Bluff, MO 63901

NOTES



This image shows a blank sheet of white paper with horizontal ruling lines. The lines are evenly spaced and run across the width of the page. There are no margins, text, or other markings on the paper.



DISCLAIMERS

Information in this brochure is provided solely for information purposes and does not constitute an offer to sell or advertise real estate outside the states in which broker or agent licensed. The information presented has been obtained from sources deemed to be reliable, but is not guaranteed or warranted by the agent, broker, or the sellers of these properties. This offering is subject to errors, omissions, prior sale, price change, correction or withdrawal from the market without notice. All references to age, square footage, income, expenses, acreage, carrying capacity, and land classification, etc. are approximate. Prospective buyers are chargeable with and expected to conduct their own independent investigation of the information and the property and to rely only on those results. Sellers reserve the right to accept or reject any and all offers without liability to any buyer or cooperating broker.

Maps are provided for illustration purposes only, the accuracy is not warranted. Parcels on interactive maps are not adjusted to match aerial backgrounds. This information is for reference purposes only and is not a legal document. Data maps contain errors. The seller and seller's agent are making known to all potential buyers that there may be variations between the location of the existing fence lines and the legal description of the deeded property. Seller and seller's agent make no warranties with regard to the location of the fence lines in relationship to the deeded property lines, nor does the Seller make any warranties or representations with regard to the specific acreage contained within the fenced property lines. Seller is selling the property in an "as is" condition, which includes the location of the fences as they exist. Boundaries shown on the accompanying maps are approximate, based on county parcel data. The maps are not to scale. The accuracy of the maps is not guaranteed. Prospective buyers are encouraged to verify fence lines, deeded property lines and acreages using a licensed surveyor at their own expense.



Mossy Oak Properties Mozark Realty

947 N. Westwood Blvd.

Poplar Bluff, MO 63901

(573) 712-2252

MossyOakProperties.com

MORE INFO ONLINE:

MossyOakProperties.com