

130 +/- Acres in Butler County, MO
County Road 451
Poplar Bluff, MO 63901

\$487,500
130± Acres
Butler County



130 +/- Acres in Butler County, MO
Poplar Bluff, MO / Butler County

SUMMARY

Address

County Road 451

City, State Zip

Poplar Bluff, MO 63901

County

Butler County

Type

Recreational Land, Hunting Land, Farms

Latitude / Longitude

36.7682 / -90.559092

Acreage

130

Price

\$487,500

Property Website

<https://www.mossyoakproperties.com/property/130-acres-in-butler-county-mo-butler-missouri/47301/>



MORE INFO ONLINE:

MossyOakProperties.com

130 +/- Acres in Butler County, MO
Poplar Bluff, MO / Butler County

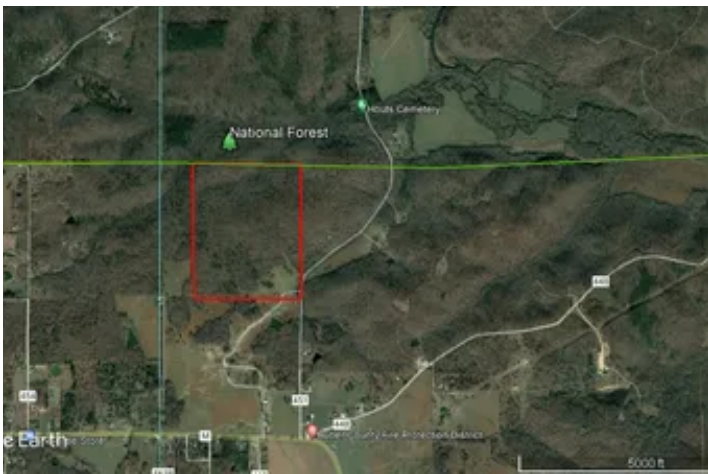
PROPERTY DESCRIPTION

130ac +/- adjoining Mark Twain National Forest lands in Western Butler County, Missouri. Accessed directly via paved County Road, this mostly wooded and unrestricted tract is comprised of a gently rolling ridge full of native hardwood timber that's brimming with wildlife. With approx. 10 acres of meadow on the South end and a stock pond this would make a great homeplace for someone looking to have a few horses or cows. There are several fantastic homesites throughout the landscape. Facing South you are certain to enjoy the vista offered by the sun setting over the adjoining ranch. Several hundred acres of National Forest land to the North grants an opportunity to hunt and explore beyond the boundaries of the parent parcel. Electricity runs along the county road. This quiet and peaceful Ozark Country gem is far enough to still find yourself in awe of the night skies but conveniently located 20 minutes from the center of Poplar Bluff.

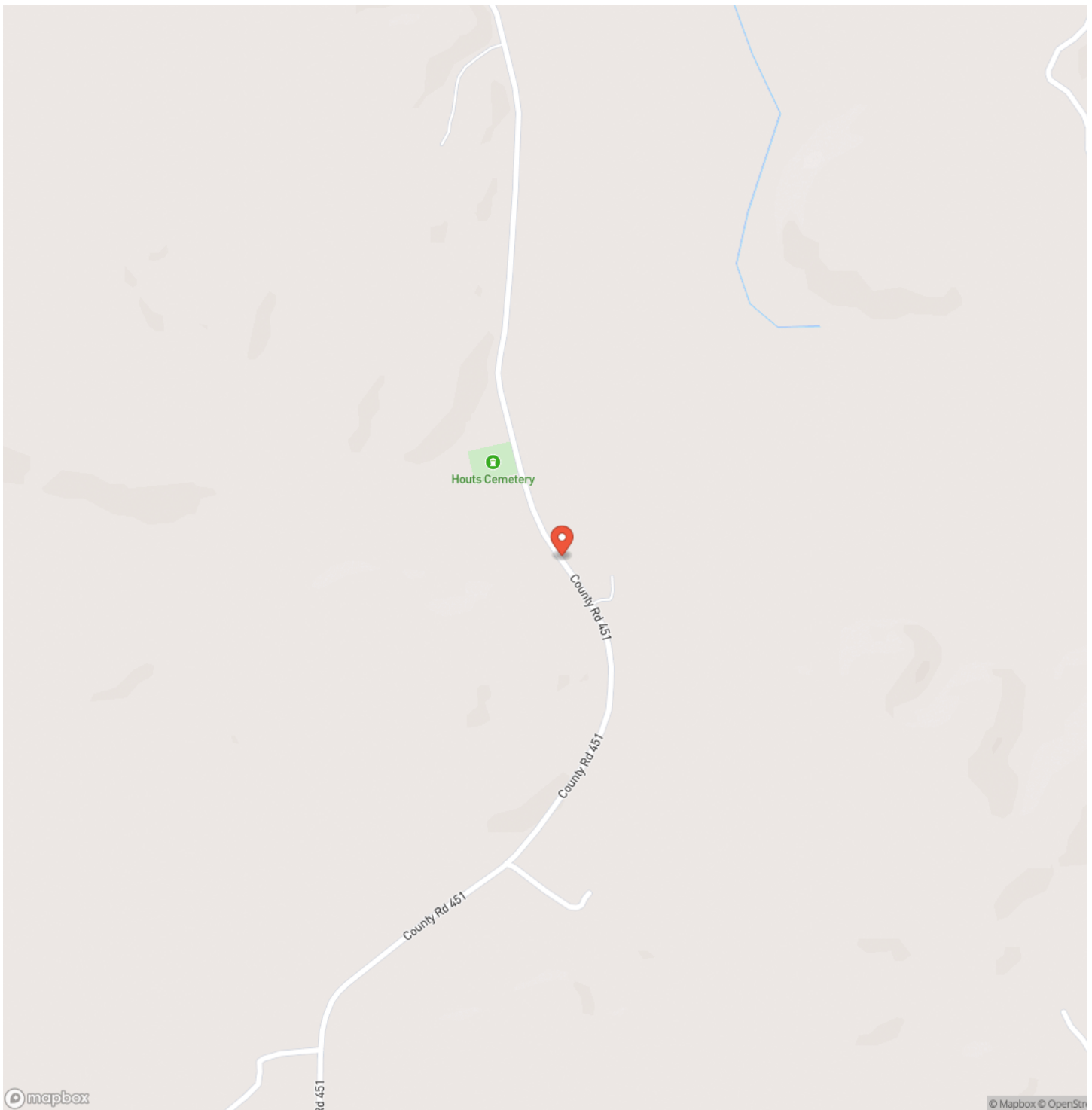
MORE INFO ONLINE:

MossyOakProperties.com

130 +/- Acres in Butler County, MO
Poplar Bluff, MO / Butler County

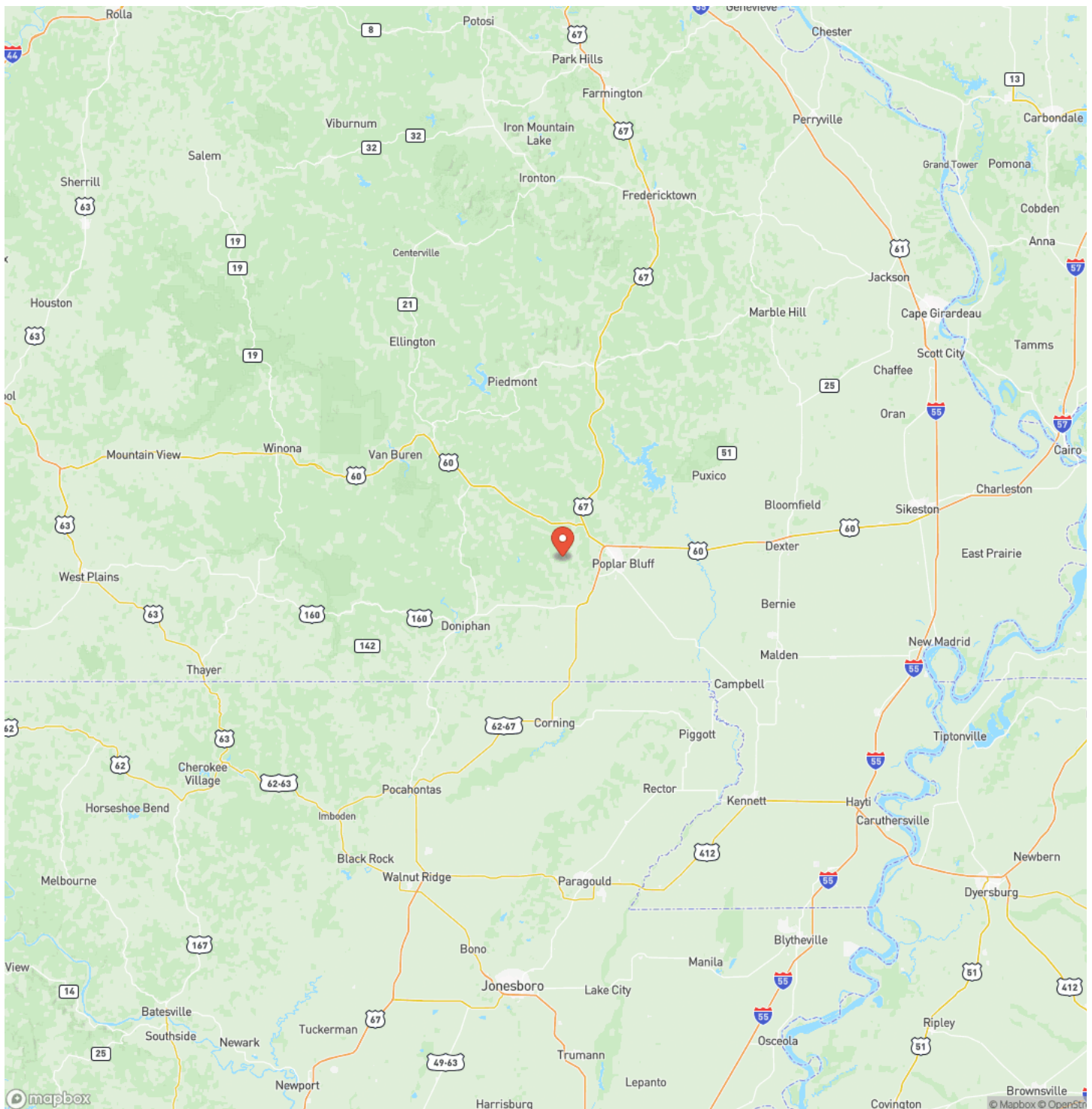


Locator Map



130 +/- Acres in Butler County, MO
Poplar Bluff, MO / Butler County

Locator Map



MORE INFO ONLINE:

MossyOakProperties.com

130 +/- Acres in Butler County, MO
Poplar Bluff, MO / Butler County

Satellite Map



130 +/- Acres in Butler County, MO
Poplar Bluff, MO / Butler County

LISTING REPRESENTATIVE

For more information contact:



Representative

Lucas Edington

Mobile

(573) 718-2800

Office

(573) 712-2252

Email

ledington@mossyoakproperties.com

Address

947 N. Westwood Blvd.

City / State / Zip

NOTES



MORE INFO ONLINE:

MossyOakProperties.com

[illegible]

DISCLAIMERS

Information in this brochure is provided solely for information purposes and does not constitute an offer to sell or advertise real estate outside the states in which broker or agent licensed. The information presented has been obtained from sources deemed to be reliable, but is not guaranteed or warranted by the agent, broker, or the sellers of these properties. This offering is subject to errors, omissions, prior sale, price change, correction or withdrawal from the market without notice. All references to age, square footage, income, expenses, acreage, carrying capacity, and land classification, etc. are approximate. Prospective buyers are chargeable with and expected to conduct their own independent investigation of the information and the property and to rely only on those results. Sellers reserve the right to accept or reject any and all offers without liability to any buyer or cooperating broker.

Maps are provided for illustration purposes only, the accuracy is not warranted. Parcels on interactive maps are not adjusted to match aerial backgrounds. This information is for reference purposes only and is not a legal document. Data maps contain errors. The seller and seller's agent are making known to all potential buyers that there may be variations between the location of the existing fence lines and the legal description of the deeded property. Seller and seller's agent make no warranties with regard to the location of the fence lines in relationship to the deeded property lines, nor does the Seller make any warranties or representations with regard to the specific acreage contained within the fenced property lines. Seller is selling the property in an "as is" condition, which includes the location of the fences as they exist. Boundaries shown on the accompanying maps are approximate, based on county parcel data. The maps are not to scale. The accuracy of the maps is not guaranteed. Prospective buyers are encouraged to verify fence lines, deeded property lines and acreages using a licensed surveyor at their own expense.



Mossy Oak Properties Mozark Realty
947 N. Westwood Blvd.
Poplar Bluff, MO 63901
(573) 712-2252
MossyOakProperties.com

