

**Gorgeous 3 Bed, 2 Bath in Butler County, MO**  
2212 Jane Springs  
Poplar Bluff, MO 63901

**\$269,900**  
0.410± Acres  
Butler County



**MORE INFO ONLINE:**

**[MossyOakProperties.com](http://MossyOakProperties.com)**



**Gorgeous 3 Bed, 2 Bath in Butler County, MO**  
**Poplar Bluff, MO / Butler County**

---

**SUMMARY**

**Address**

2212 Jane Springs

**City, State Zip**

Poplar Bluff, MO 63901

**County**

Butler County

**Type**

Residential Property

**Latitude / Longitude**

36.791285 / -90.46111

**Dwelling Square Feet**

2392

**Bedrooms / Bathrooms**

3 / 2

**Acreage**

0.410

**Price**

\$269,900

**Property Website**

<https://www.mossyoakproperties.com/property/gorgeous-3-bed-2-bath-in-butler-county-mo-butler-missouri/46458/>



**MORE INFO ONLINE:**

**MossyOakProperties.com**

**Gorgeous 3 Bed, 2 Bath in Butler County, MO**  
**Poplar Bluff, MO / Butler County**

---

**PROPERTY DESCRIPTION**

2212 Jane Springs, Poplar Bluff MO - Very nice subdivision home located in Still Creek Crossing near shopping, medical and schools off of Oak Grove Road. Enter this well maintained 3b 2ba to be greeted by cathedral ceilings and an open living area with hardwood flooring and crown moulding. Custom kitchen cabinets with a center island and breakfast buffet adorned with stainless appliances. A very generous master suite features coffered ceiling, dual closets and vanities with a custom tiled shower and separate garden tub. Relax on the rear deck overlooking a level yard with detached shed / workshop or entertain from the covered and screened porch that's just right off the dining area. Shown by appointment only.

**MORE INFO ONLINE:**

**[MossyOakProperties.com](http://MossyOakProperties.com)**



Gorgeous 3 Bed, 2 Bath in Butler County, MO  
Poplar Bluff, MO / Butler County



**MORE INFO ONLINE:**

**[MossyOakProperties.com](http://MossyOakProperties.com)**

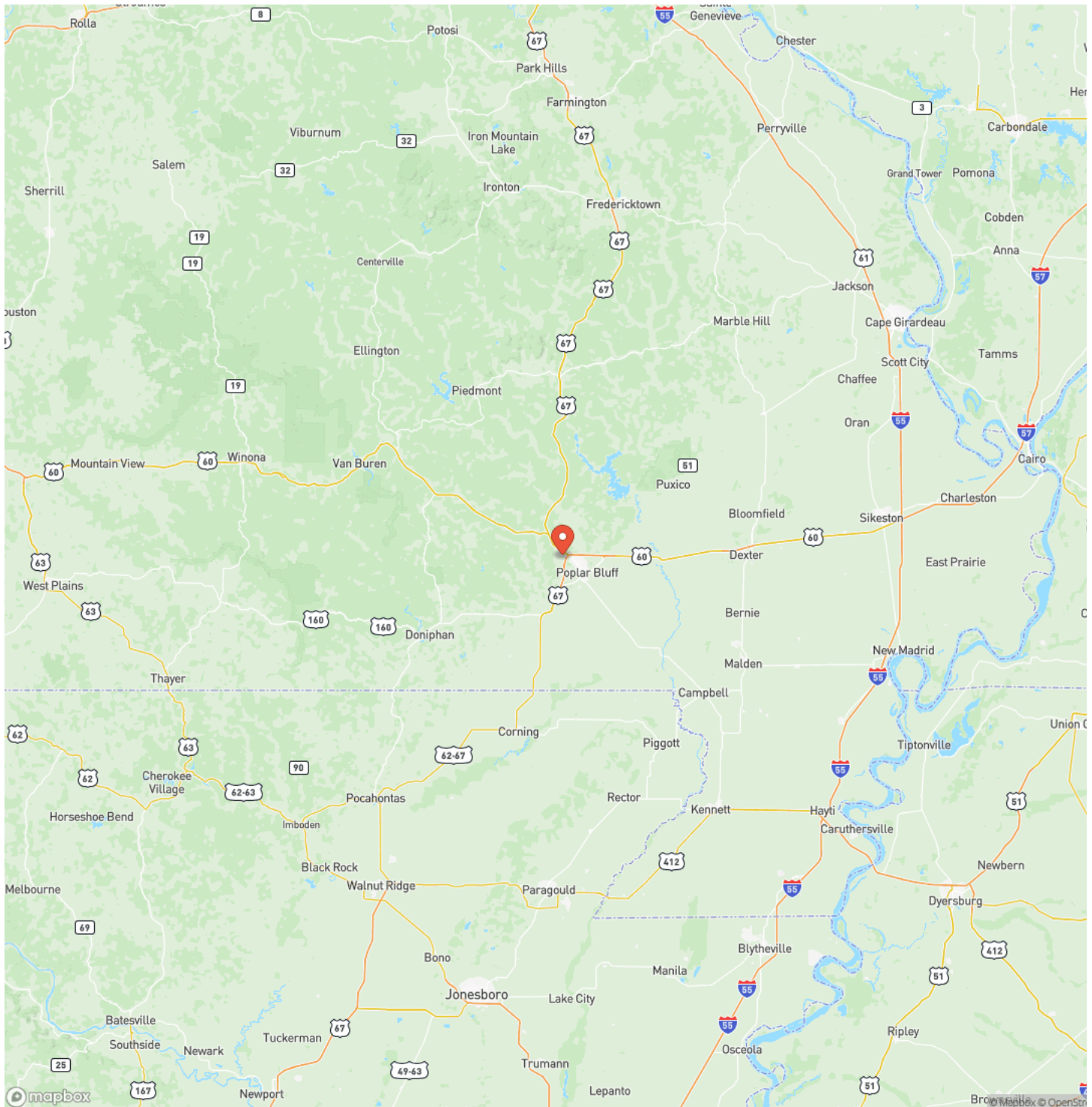
## Locator Map





## Gorgeous 3 Bed, 2 Bath in Butler County, MO Poplar Bluff, MO / Butler County

## Locator Map



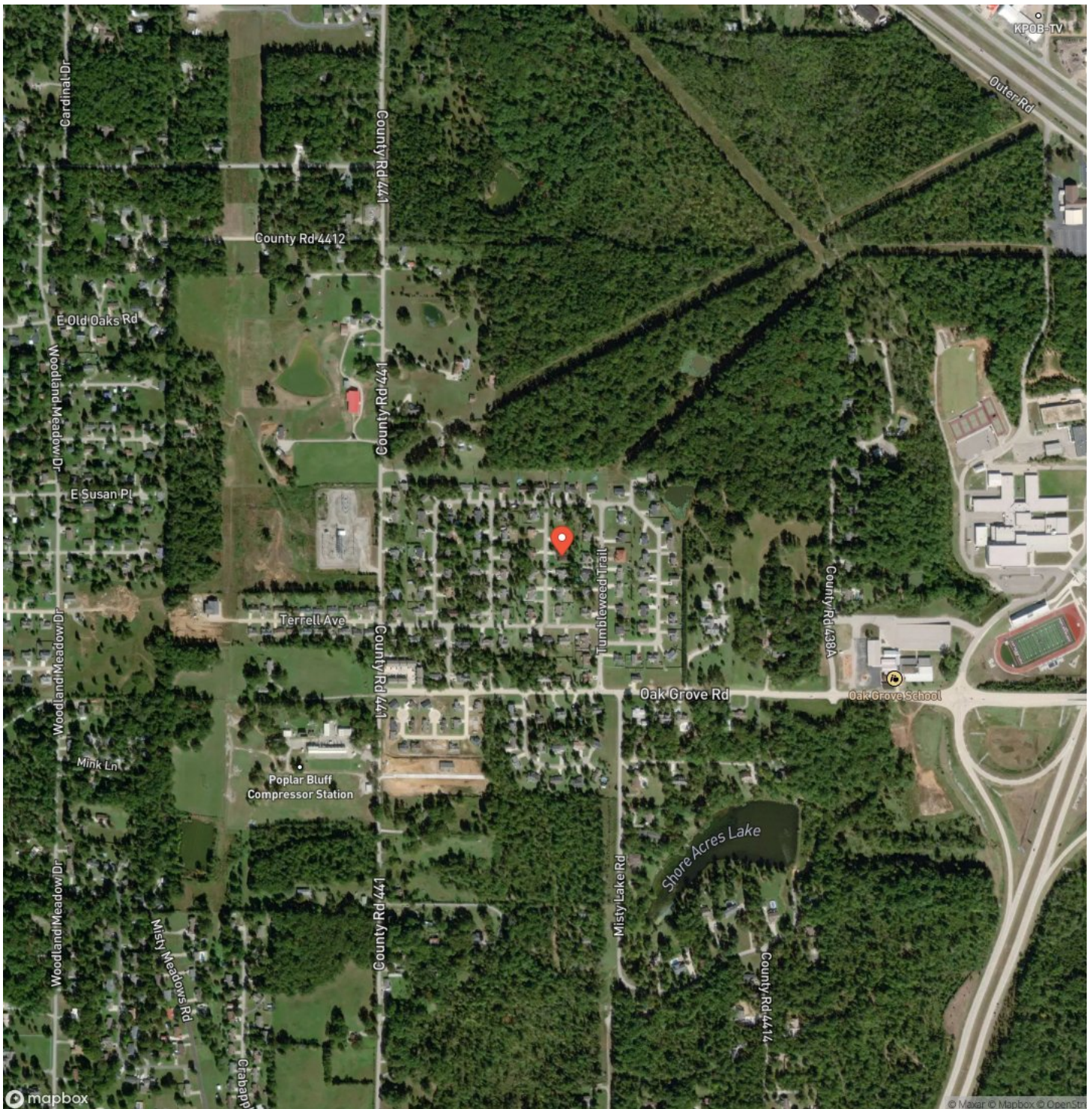
**MORE INFO ONLINE:**

**MossyOakProperties.com**



Gorgeous 3 Bed, 2 Bath in Butler County, MO  
Poplar Bluff, MO / Butler County

## Satellite Map



## Gorgeous 3 Bed, 2 Bath in Butler County, MO Poplar Bluff, MO / Butler County

## LISTING REPRESENTATIVE

**For more information contact:**



### Representative

Lucas Edington

## Mobile

(573) 718-2800

## Office

(573) 712-2252

## Email

ledington@mossyoakproperties.com

**Address**

947 N. Westwood Blvd.

## City / State / Zip

Poplar Bluff, MO 63901

## NOTES

[illegible]

**MORE INFO ONLINE:**

**MossyOakProperties.com**



[illegible]

## **DISCLAIMERS**

Information in this brochure is provided solely for information purposes and does not constitute an offer to sell or advertise real estate outside the states in which broker or agent licensed. The information presented has been obtained from sources deemed to be reliable, but is not guaranteed or warranted by the agent, broker, or the sellers of these properties. This offering is subject to errors, omissions, prior sale, price change, correction or withdrawal from the market without notice. All references to age, square footage, income, expenses, acreage, carrying capacity, and land classification, etc. are approximate. Prospective buyers are chargeable with and expected to conduct their own independent investigation of the information and the property and to rely only on those results. Sellers reserve the right to accept or reject any and all offers without liability to any buyer or cooperating broker.

Maps are provided for illustration purposes only, the accuracy is not warranted. Parcels on interactive maps are not adjusted to match aerial backgrounds. This information is for reference purposes only and is not a legal document. Data maps contain errors. The seller and seller's agent are making known to all potential buyers that there may be variations between the location of the existing fence lines and the legal description of the deeded property. Seller and seller's agent make no warranties with regard to the location of the fence lines in relationship to the deeded property lines, nor does the Seller make any warranties or representations with regard to the specific acreage contained within the fenced property lines. Seller is selling the property in an "as is" condition, which includes the location of the fences as they exist. Boundaries shown on the accompanying maps are approximate, based on county parcel data. The maps are not to scale. The accuracy of the maps is not guaranteed. Prospective buyers are encouraged to verify fence lines, deeded property lines and acreages using a licensed surveyor at their own expense.





---

**Mossy Oak Properties Mozark Realty**  
947 N. Westwood Blvd.  
Poplar Bluff, MO 63901  
(573) 712-2252  
[MossyOakProperties.com](http://MossyOakProperties.com)

---

