

275 +/- acres with River Front  
000 County Road 421  
Mill Spring, MO 63952

**\$525,000**  
275± Acres  
Wayne County





**275 +/- acres with River Front**  
**Mill Spring, MO / Wayne County**

---

**SUMMARY**

**Address**

000 County Road 421

**City, State Zip**

Mill Spring, MO 63952

**County**

Wayne County

**Type**

Recreational Land, Riverfront, Hunting Land, Undeveloped Land

**Latitude / Longitude**

37.008185 / -90.609387

**Acreage**

275

**Price**

\$525,000

**Property Website**

<https://www.mossyoakproperties.com/property/275-acres-with-river-front-wayne-missouri/34231/>



**MORE INFO ONLINE:**

**MossyOakProperties.com**

**275 +/- acres with River Front**  
**Mill Spring, MO / Wayne County**

---

**PROPERTY DESCRIPTION**

Riverfront land for sale in Wayne County, Missouri. 275 +/- acres featuring 1 mile of Black River frontage, 1 mile of County Road frontage, granite stone quarry and 1 mile of railway. This bona fide year-round getaway offers excellent whitetail deer and turkey hunting and has of the nicest sand bars along the waterways. Adjoins several thousand acres of Mark Twain National Forest. There are several level building spots along the county road offering beautiful vistas across the river valley below. This property would make a great candidate for dividing into parcels. The granite outcroppings and cut stone features are impressive, and could offer the savvy buyer an additional income source. This mixed-use recreational tract is only restricted to the buyer's imagination. If you are looking for a quiet country escape give this magnificent model of Ozark Glade landscape your proper consideration.

**MORE INFO ONLINE:**

**[MossyOakProperties.com](http://MossyOakProperties.com)**





275 +/- acres with River Front  
Mill Spring, MO / Wayne County

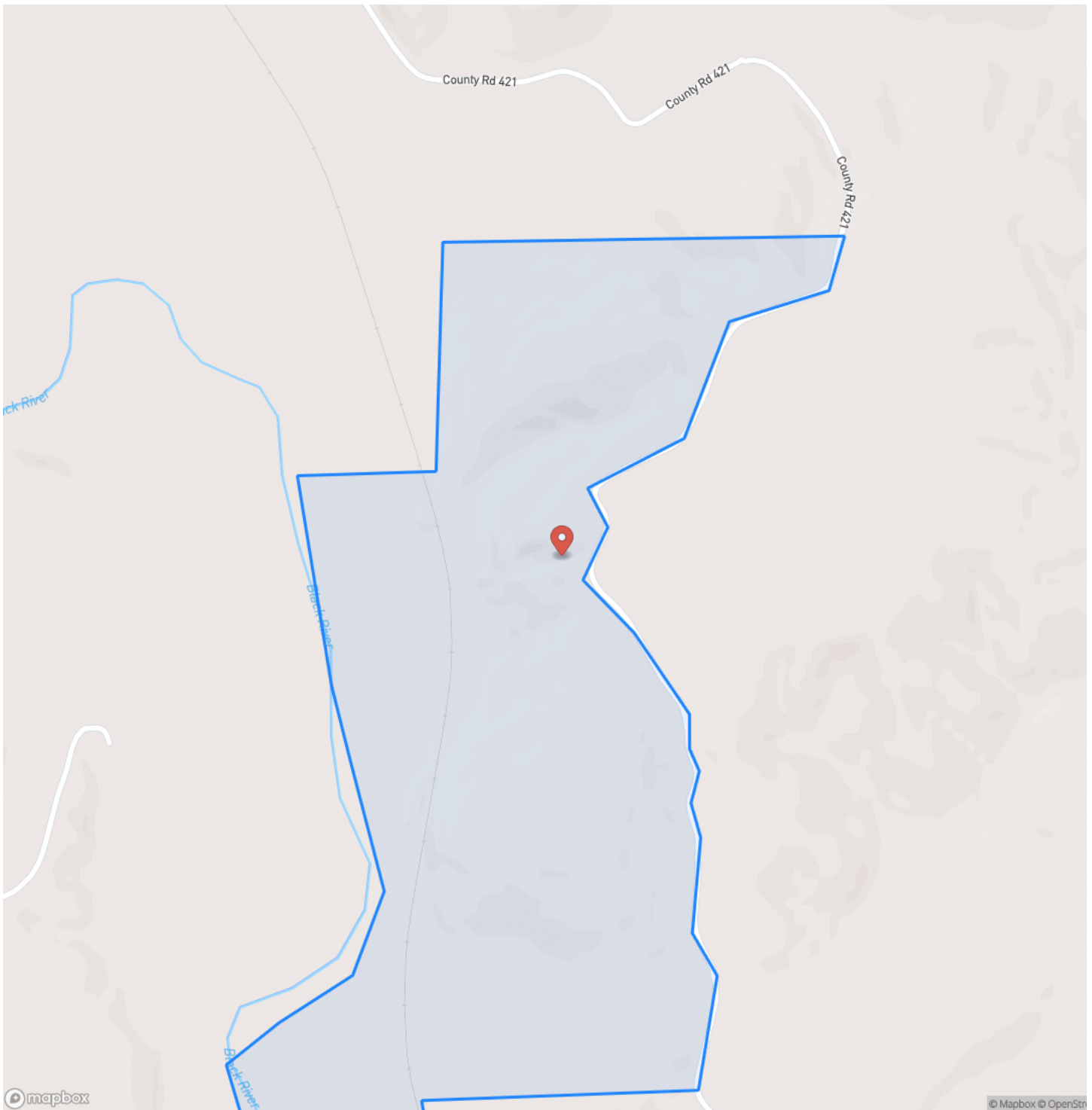
---



**MORE INFO ONLINE:**

**[MossyOakProperties.com](http://MossyOakProperties.com)**

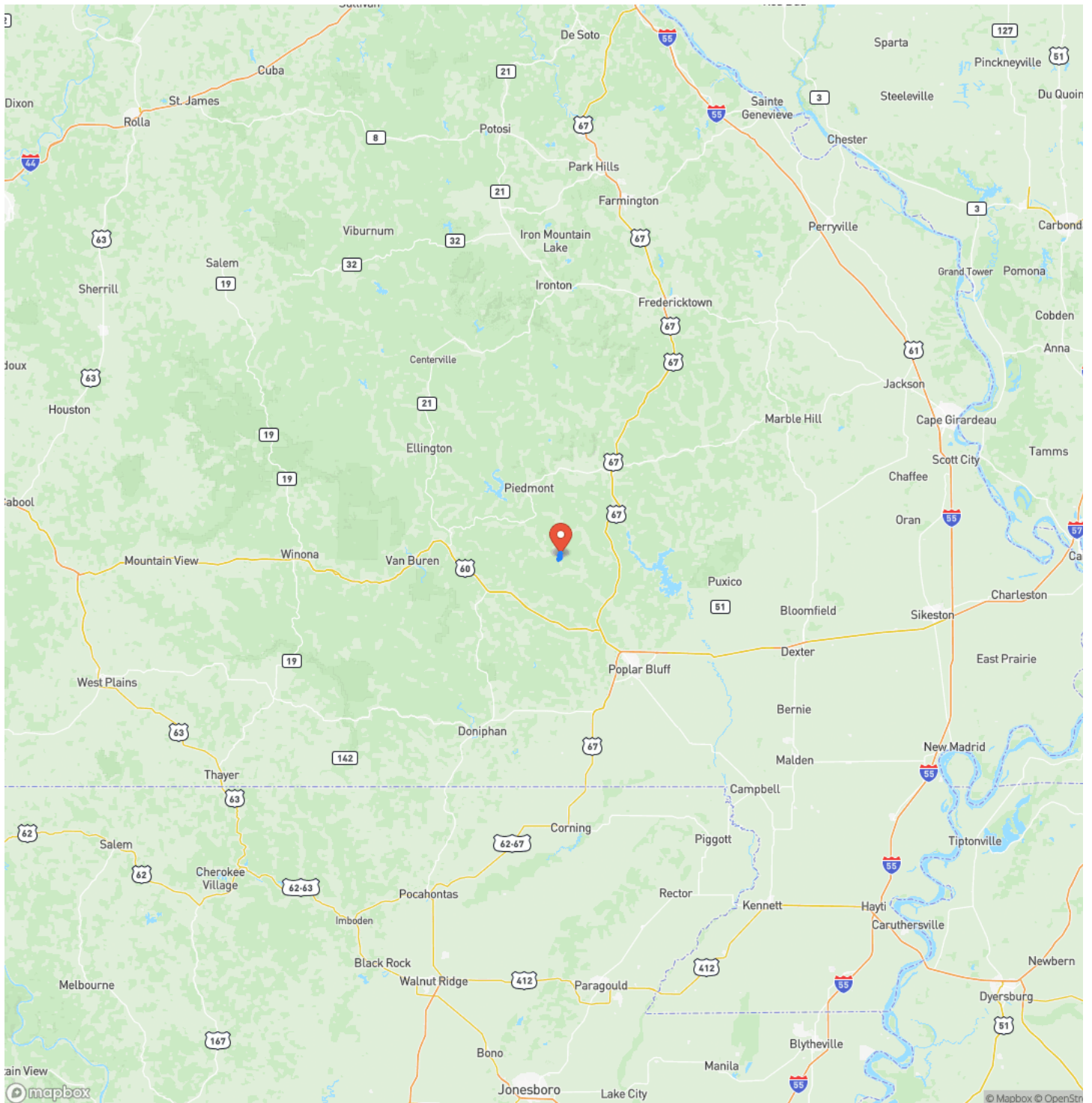
## Locator Map





275 +/- acres with River Front  
Mill Spring, MO / Wayne County

## Locator Map



**MORE INFO ONLINE:**

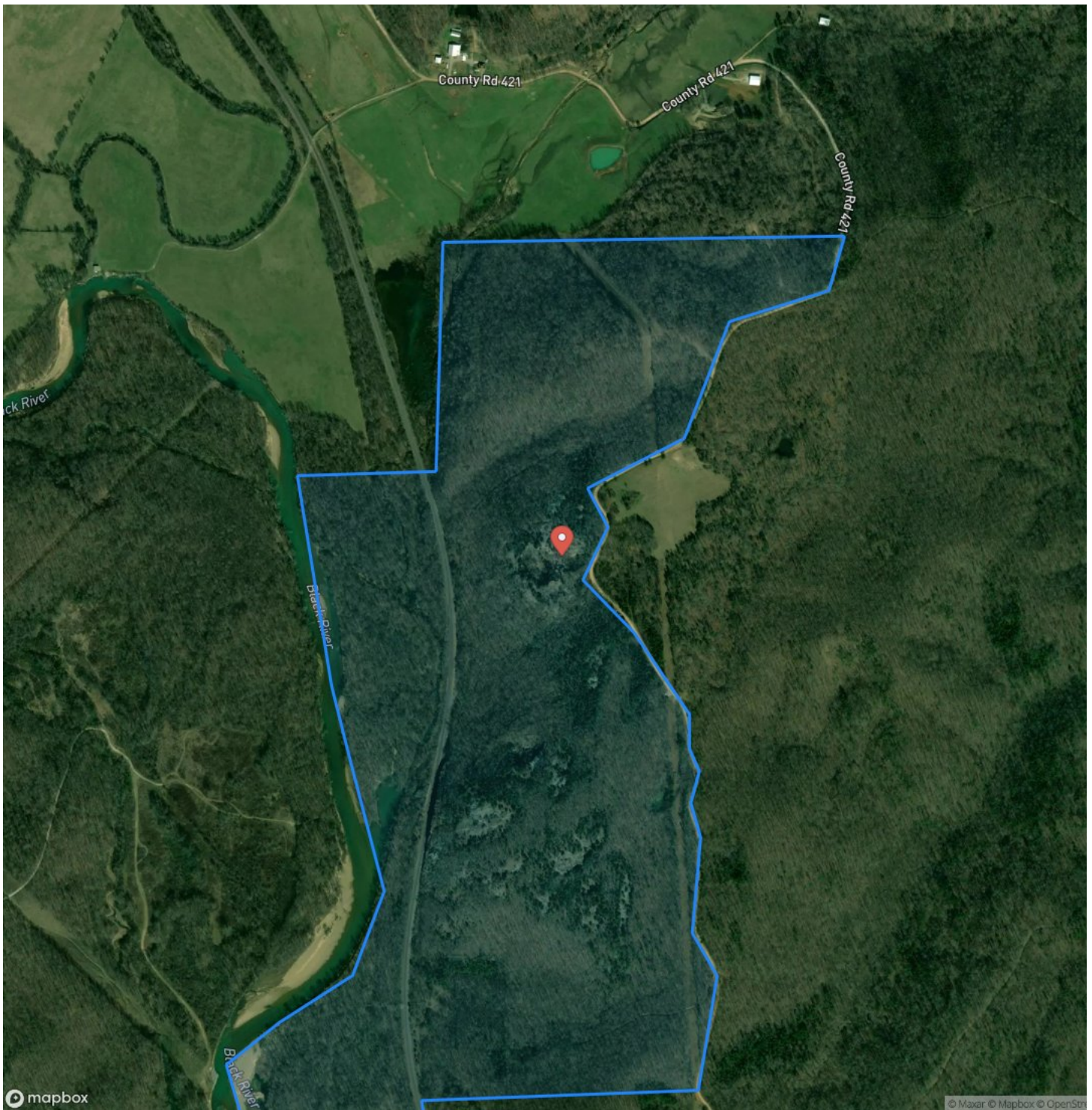
**[MossyOakProperties.com](http://MossyOakProperties.com)**



275 +/- acres with River Front  
Mill Spring, MO / Wayne County

---

## Satellite Map





**275 +/- acres with River Front  
Mill Spring, MO / Wayne County**

## LISTING REPRESENTATIVE

**For more information contact:**



### Representative

Lucas Edington

## Mobile

(573) 718-2800

## Office

(573) 712-2252

## Email

ledington@mossyoakproperties.com

**Address**

947 N. Westwood Blvd.

## City / State / Zip

Poplar Bluff, MO 63901

## NOTES



**MORE INFO ONLINE:**

**MossyOakProperties.com**



[illegible]

## **DISCLAIMERS**

Information in this brochure is provided solely for information purposes and does not constitute an offer to sell or advertise real estate outside the states in which broker or agent licensed. The information presented has been obtained from sources deemed to be reliable, is not guaranteed or warranted by the agent, broker, or the sellers of these properties. This offering is subject to errors, omissions, prior sale, price change, correction or withdrawal from the market without notice. All references to age, square footage, income, expenses, acreage, carrying capacity, and land classification, etc. are approximate. Prospective buyers are chargeable with and expected to conduct their own independent investigation of the information and the property and to rely only on those results. Sellers reserve the right to accept or reject any and all offers without liability to any buyer or cooperating broker.

Maps are provided for illustration purposes only, the accuracy is not warranted. Parcels on interactive maps are not adjusted to match aerial backgrounds. This information is for reference purposes only and is not a legal document. Data maps contain errors. The seller and seller's agent are making known to all potential buyers that there may be variations between the location of the existing fence lines and the legal description of the deeded property. Seller and seller's agent make no warranties with regard to the location of the fence lines in relation to the deeded property lines, nor does the Seller make any warranties or representations with regard to the specific acreage contained within the fenced property lines. Seller is selling the property in an "as is" condition, which includes the location of the fences as they exist. Boundaries shown on the accompanying maps are approximate, based on county parcel data. The maps are not to scale. The accuracy of the maps is not guaranteed. Prospective buyers are encouraged to verify fence lines, deeded property lines and acreages using a licensed surveyor at their own expense.





---

**Mossy Oak Properties Mozark Realty**  
947 N. Westwood Blvd.  
Poplar Bluff, MO 63901  
(573) 712-2252  
[MossyOakProperties.com](http://MossyOakProperties.com)

---

