

**Large Home on 29 Acres For Sale in Butler
County, Missouri, Poplar Bluff**
8172 Hwy C
Poplar Bluff, MO 63901

\$360,000
29 +/- acres
Butler County



Large Home on 29 Acres For Sale in Butler County, Missouri, Poplar Bluff

Poplar Bluff, MO / Butler County

SUMMARY

Address

8172 Hwy C

City, State Zip

Poplar Bluff, MO 63901

County

Butler County

Type

Ranches, Horse Property, Single Family

Latitude / Longitude

38.1898793 / -91.3699673

Taxes (Annually)

762

Dwelling Square Feet

2454

Acreage

29

Price

\$360,000

Property Website

<https://www.mossyoakproperties.com/property/large-home-on-29-acres-for-sale-in-butler-county-missouri-poplar-bluff-butler-missouri/23554/>



MORE INFO ONLINE:

MossyOakProperties.com

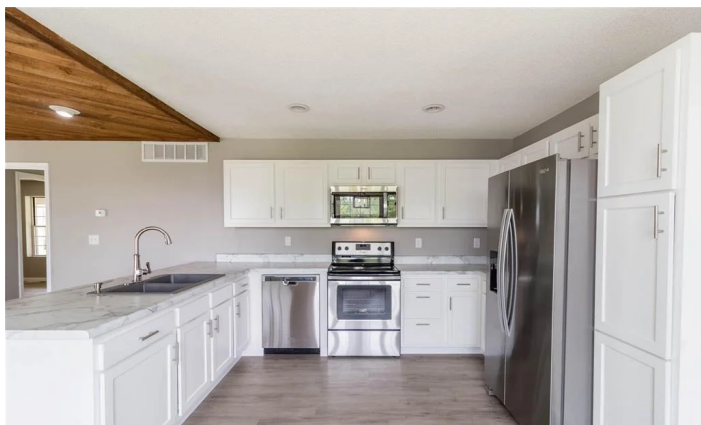
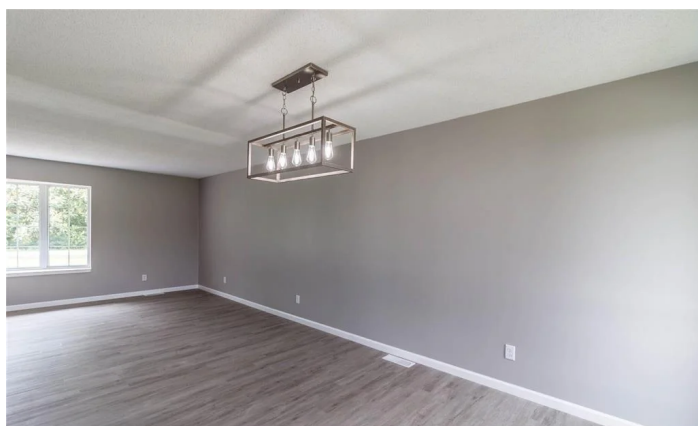
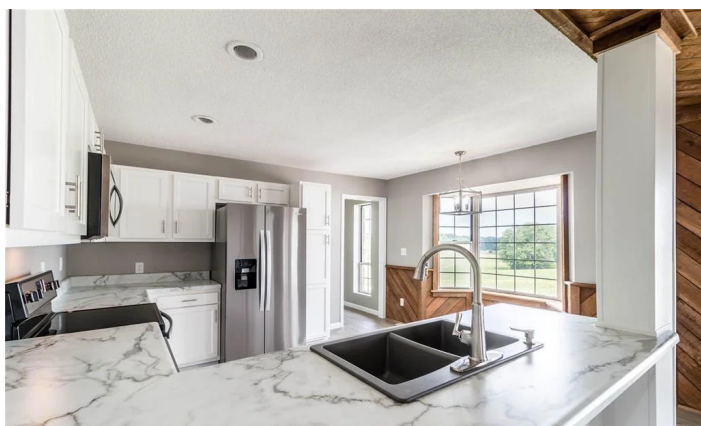
Large Home on 29 Acres For Sale in Butler County, Missouri, Poplar Bluff Poplar Bluff, MO / Butler County

PROPERTY DESCRIPTION

One of a kind property! This sprawling farm will take your breath away with its gorgeous, rolling hills dappled with mature shade trees. The fully fenced perimeter, pond and numerous outbuildings offer endless opportunities for use of these park-like pastures. The classic farmhouse style home features abundant natural lighting as well as charming wood accents contrasted perfectly with the modern cabinetry, flooring, and fixtures. From the back deck you'll find a stunning overlook of the countryside.



Large Home on 29 Acres For Sale in Butler County, Missouri, Poplar Bluff Poplar Bluff, MO / Butler County



Locator Maps



Aerial Maps



MORE INFO ONLINE:

MossyOakProperties.com

Large Home on 29 Acres For Sale in Butler County, Missouri, Poplar Bluff
Poplar Bluff, MO / Butler County

LISTING REPRESENTATIVE

For more information contact:



Representative

McKenzie Taylor

Mobile

(573) 300-8722

Office

(573) 712-2252

Email

mtaylor@mossyoakproperties.com

Address

947 N. Westwood Blvd.

City / State / Zip

Poplar Bluff, MO 63901

NOTES

This image shows a blank sheet of white paper with horizontal ruling lines. The lines are evenly spaced and run across the width of the page. There are no margins, text, or other markings on the paper.



DISCLAIMERS

Information in this brochure is provided solely for information purposes and does not constitute an offer to sell or advertise real estate outside the states in which broker or agent licensed. The information presented has been obtained from sources deemed to be reliable, but is not guaranteed or warranted by the agent, broker, or the sellers of these properties. This offering is subject to errors, omissions, prior sale, price change, correction or withdrawal from the market without notice. All references to age, square footage, income, expenses, acreage, carrying capacity, and land classification, etc. are approximate. Prospective buyers are chargeable with and expected to conduct their own independent investigation of the information and the property and to rely only on those results. Sellers reserve the right to accept or reject any and all offers without liability to any buyer or cooperating broker.

Maps are provided for illustration purposes only, the accuracy is not warranted. Parcels on interactive maps are not adjusted to match aerial backgrounds. This information is for reference purposes only and is not a legal document. Data maps contain errors. The seller and seller's agent are making known to all potential buyers that there may be variations between the location of the existing fence lines and the legal description of the deeded property. Seller and seller's agent make no warranties with regard to the location of the fence lines in relationship to the deeded property lines, nor does the Seller make any warranties or representations with regard to the specific acreage contained within the fenced property lines. Seller is selling the property in an "as is" condition, which includes the location of the fences as they exist. Boundaries shown on the accompanying maps are approximate, based on county parcel data. The maps are not to scale. The accuracy of the maps is not guaranteed. Prospective buyers are encouraged to verify fence lines, deeded property lines and acreages using a licensed surveyor at their own expense.



Mossy Oak Properties Mozark Realty

947 N. Westwood Blvd.

Poplar Bluff, MO 63901

(573) 712-2252

MossyOakProperties.com

MORE INFO ONLINE:

MossyOakProperties.com