

Renovated Home in Butler County, MO
273 County Road 4412
Poplar Bluff, MO 63901

\$275,000
0.800± Acres
Butler County



MORE INFO ONLINE:

MossyOakProperties.com

Renovated Home in Butler County, MO
Poplar Bluff, MO / Butler County

SUMMARY

Address

273 County Road 4412

City, State Zip

Poplar Bluff, MO 63901

County

Butler County

Type

Residential Property

Latitude / Longitude

36.798509 / -90.469681

Dwelling Square Feet

1727

Bedrooms / Bathrooms

3 / 3

Acreage

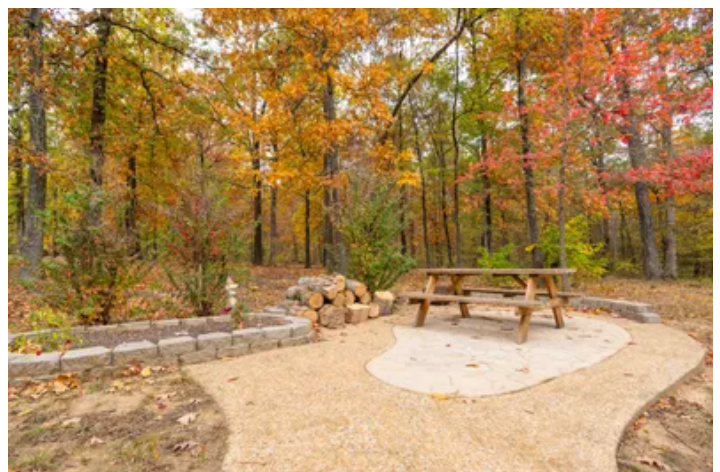
0.800

Price

\$275,000

Property Website

<https://www.mossyoakproperties.com/property/renovated-home-in-butler-county-mo-butler-missouri/47406/>



MORE INFO ONLINE:

MossyOakProperties.com

Renovated Home in Butler County, MO

Poplar Bluff, MO / Butler County

PROPERTY DESCRIPTION

Beautifully renovated home in country setting, but conveniently close to town! This gorgeous open floor plan home has 3 beds/3 baths and has been updated throughout. New roof, an updated kitchen, new paint, light fixtures, faucets and much more! Master en suite boasts a jetted tub and separate shower, plus his and her closets. A full size, walk out basement where finishing has began, but not been completed (a bathroom has been finished and drywall hung), doubles the square footage while also providing a ton of storage. A deck overlooking this wooded lot provides the perfect spot to enjoy the large private backyard. Two car garage and a 24X12 shed complete this beautiful package.



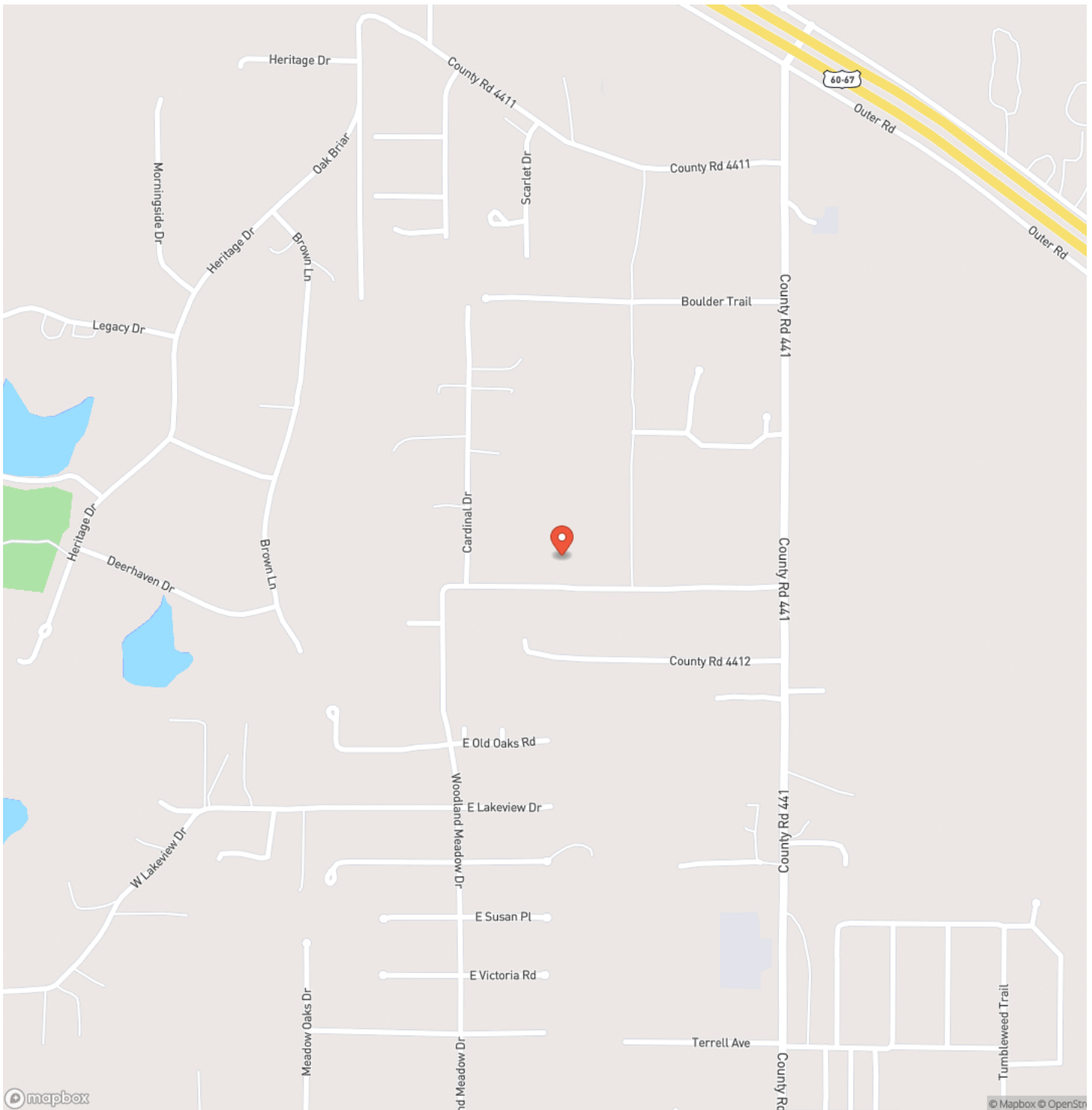
Renovated Home in Butler County, MO
Poplar Bluff, MO / Butler County



MORE INFO ONLINE:

MossyOakProperties.com

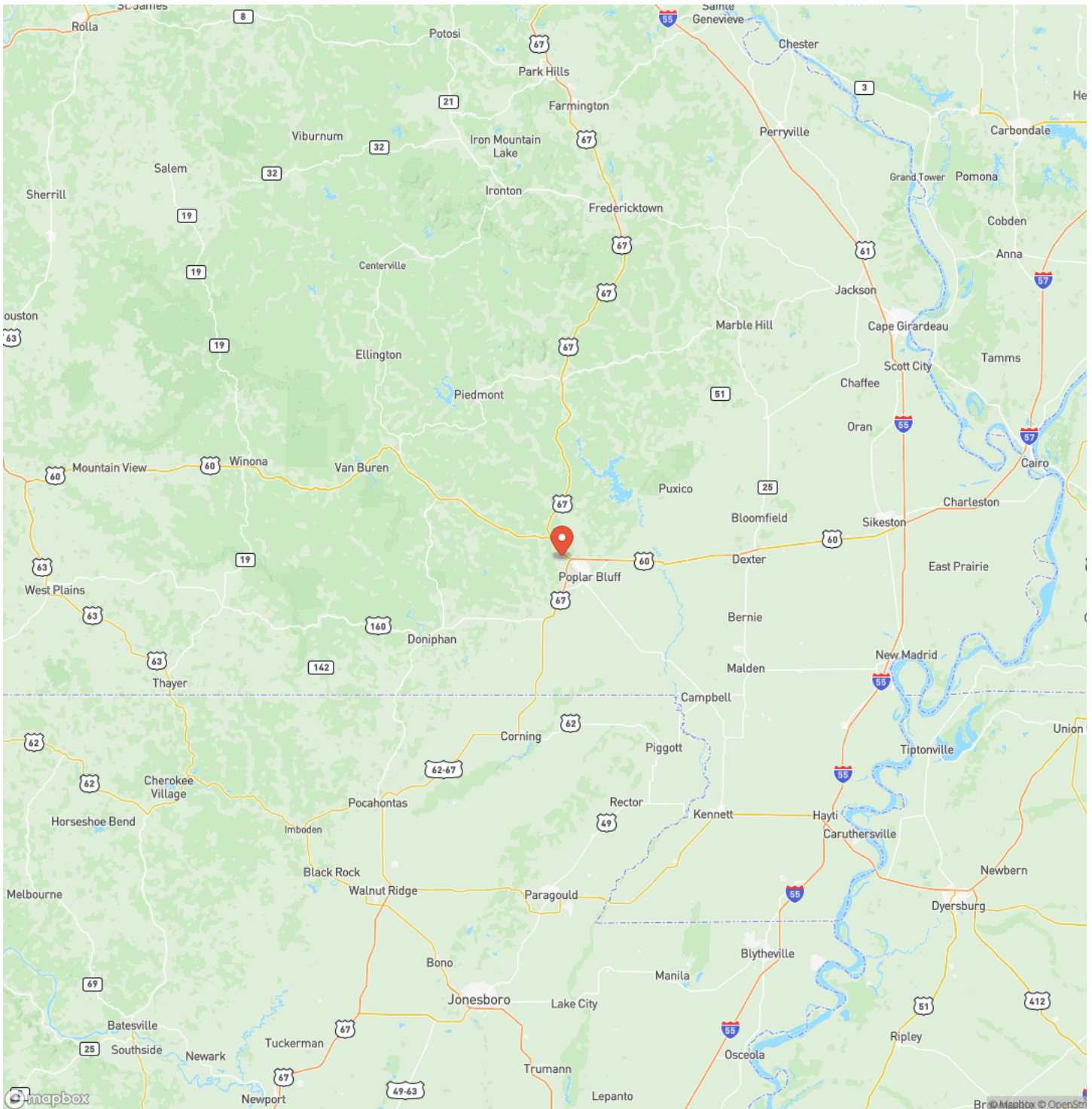
Locator Map



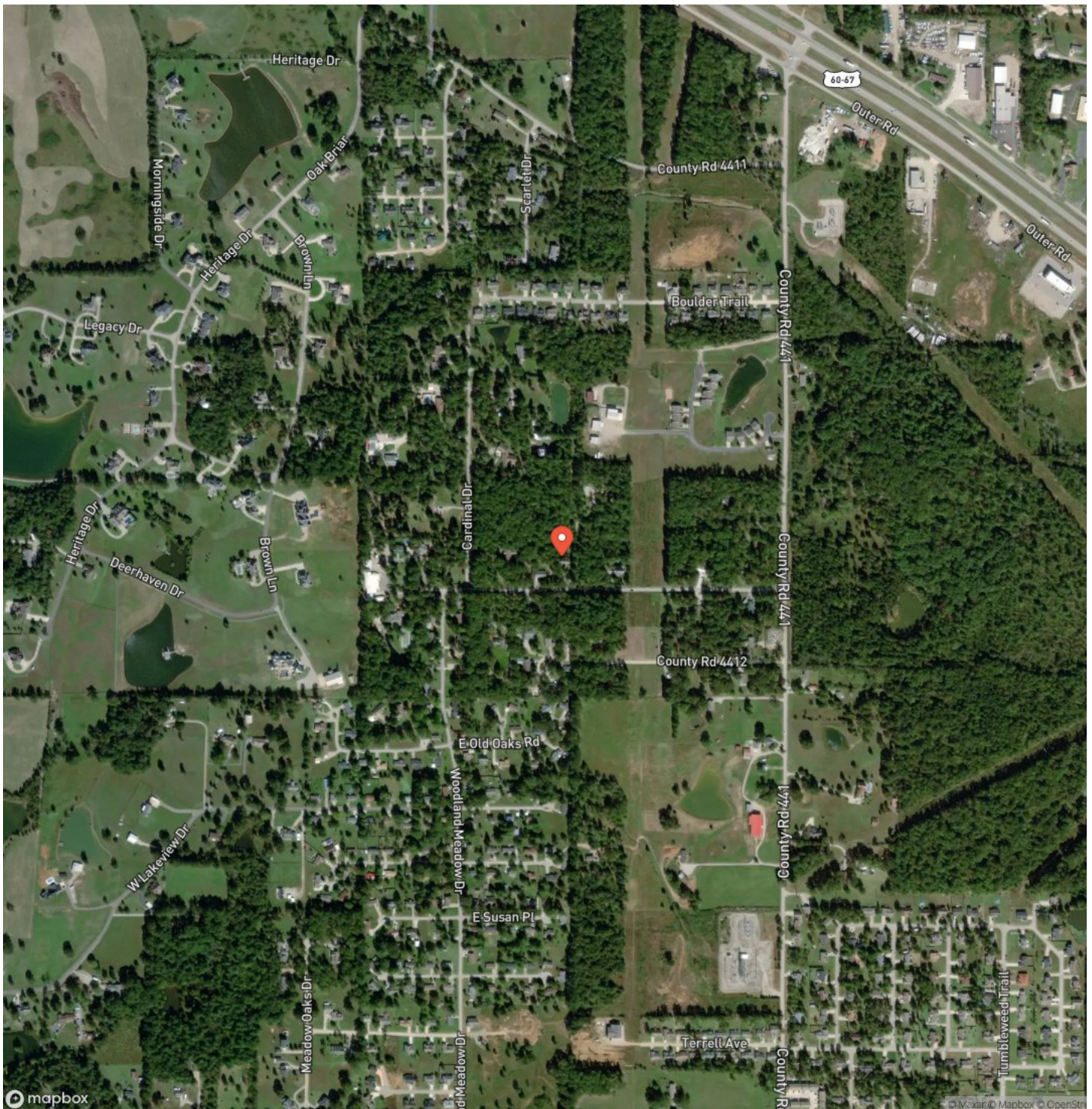
MORE INFO ONLINE:

MossyOakProperties.com

Locator Map



Satellite Map



MORE INFO ONLINE:

MossyOakProperties.com

Renovated Home in Butler County, MO

Poplar Bluff, MO / Butler County

LISTING REPRESENTATIVE

For more information contact:



Representative

Jenny Elliott

Mobile

(573) 776-5299

Office

(573) 712-2252

Email

jelliott@mossyoakproperties.com

Address

947 N. Westwood Blvd.

City / State / Zip

Poplar Bluff, MO 63901

NOTES



MORE INFO ONLINE:

MossyOakProperties.com

[illegible]

DISCLAIMERS

Information in this brochure is provided solely for information purposes and does not constitute an offer to sell or advertise real estate outside the states in which broker or agent licensed. The information presented has been obtained from sources deemed to be reliable, but is not guaranteed or warranted by the agent, broker, or the sellers of these properties. This offering is subject to errors, omissions, prior sale, price change, correction or withdrawal from the market without notice. All references to age, square footage, income, expenses, acreage, carrying capacity, and land classification, etc. are approximate. Prospective buyers are chargeable with and expected to conduct their own independent investigation of the information and the property and to rely only on those results. Sellers reserve the right to accept or reject any and all offers without liability to any buyer or cooperating broker.

Maps are provided for illustration purposes only, the accuracy is not warranted. Parcels on interactive maps are not adjusted to match aerial backgrounds. This information is for reference purposes only and is not a legal document. Data maps contain errors. The seller and seller's agent are making known to all potential buyers that there may be variations between the location of the existing fence lines and the legal description of the deeded property. Seller and seller's agent make no warranties with regard to the location of the fence lines in relationship to the deeded property lines, nor does the Seller make any warranties or representations with regard to the specific acreage contained within the fenced property lines. Seller is selling the property in an "as is" condition, which includes the location of the fences as they exist. Boundaries shown on the accompanying maps are approximate, based on county parcel data. The maps are not to scale. The accuracy of the maps is not guaranteed. Prospective buyers are encouraged to verify fence lines, deeded property lines and acreages using a licensed surveyor at their own expense.



Mossy Oak Properties Mozark Realty
947 N. Westwood Blvd.
Poplar Bluff, MO 63901
(573) 712-2252
MossyOakProperties.com

