

**Gorgeous 4 bed, 3 bath with Full Basement in Butler
County, MO**
245 Anna Drive
Poplar Bluff, MO 63901

\$299,900
0.510± Acres
Butler County



Gorgeous 4 bed, 3 bath with Full Basement in Butler County, MO
Poplar Bluff, MO / Butler County

SUMMARY

Address

245 Anna Drive

City, State Zip

Poplar Bluff, MO 63901

County

Butler County

Type

Residential Property

Latitude / Longitude

36.80809 / -90.456913

Dwelling Square Feet

3600

Bedrooms / Bathrooms

4 / 3

Acreage

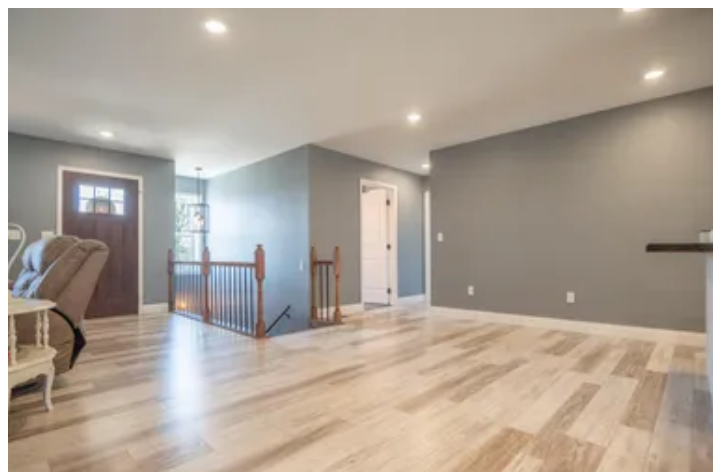
0.510

Price

\$299,900

Property Website

<https://www.mossyoakproperties.com/property/gorgeous-4-bed-3-bath-with-full-basement-in-butler-county-mo-butler-missouri/42060/>



MORE INFO ONLINE:

MossyOakProperties.com

Gorgeous 4 bed, 3 bath with Full Basement in Butler County, MO
Poplar Bluff, MO / Butler County

PROPERTY DESCRIPTION

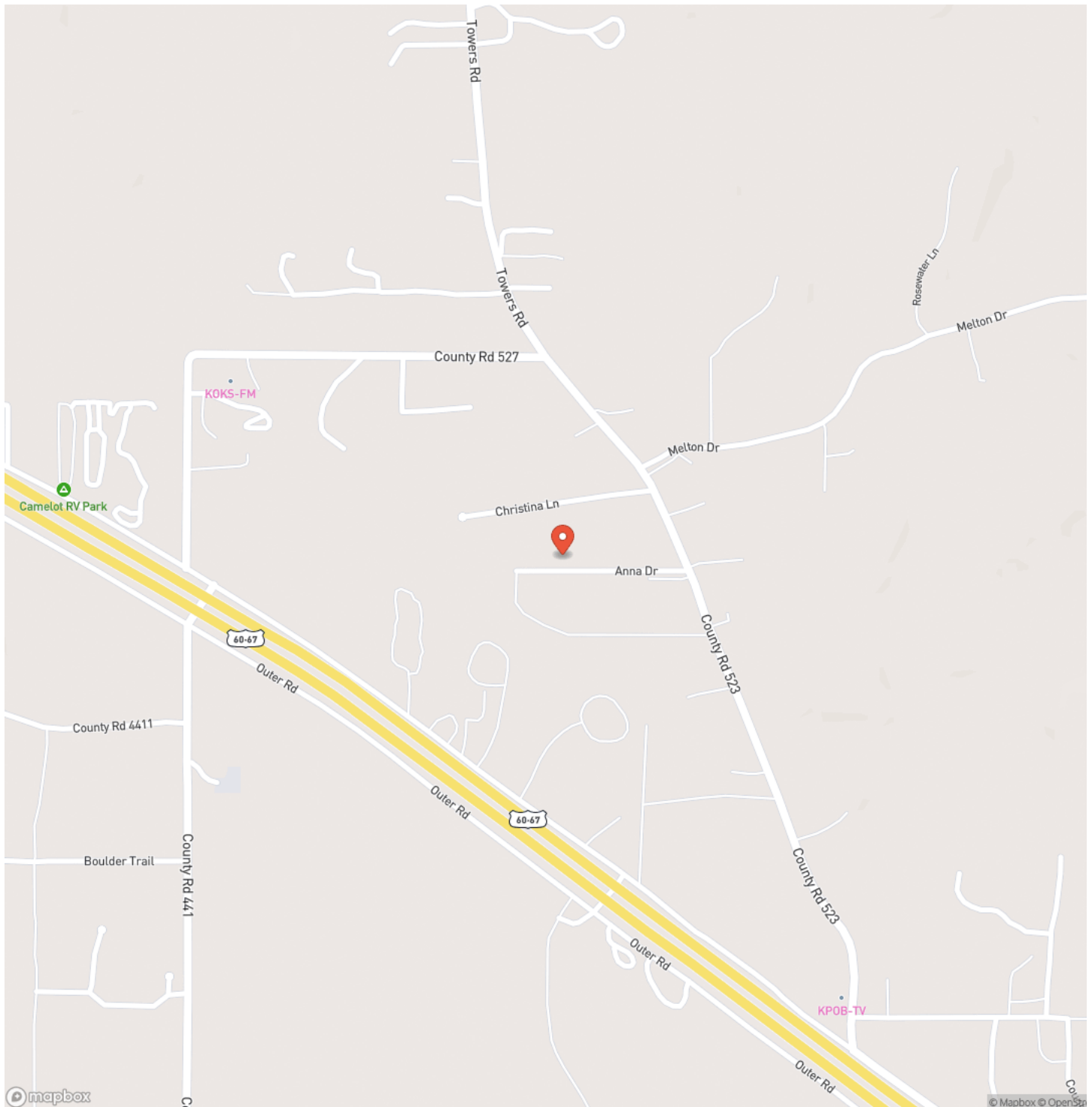
Newly constructed open floorplan with 3600 square feet of living area. This home offers 4 bedrooms, 3 bathrooms, 2 living areas, huge walk-in closets, and shower. Outside you will find 2 separate drives and a fenced in yard sitting on over a half acre on a dead end road.



Gorgeous 4 bed, 3 bath with Full Basement in Butler County, MO
Poplar Bluff, MO / Butler County

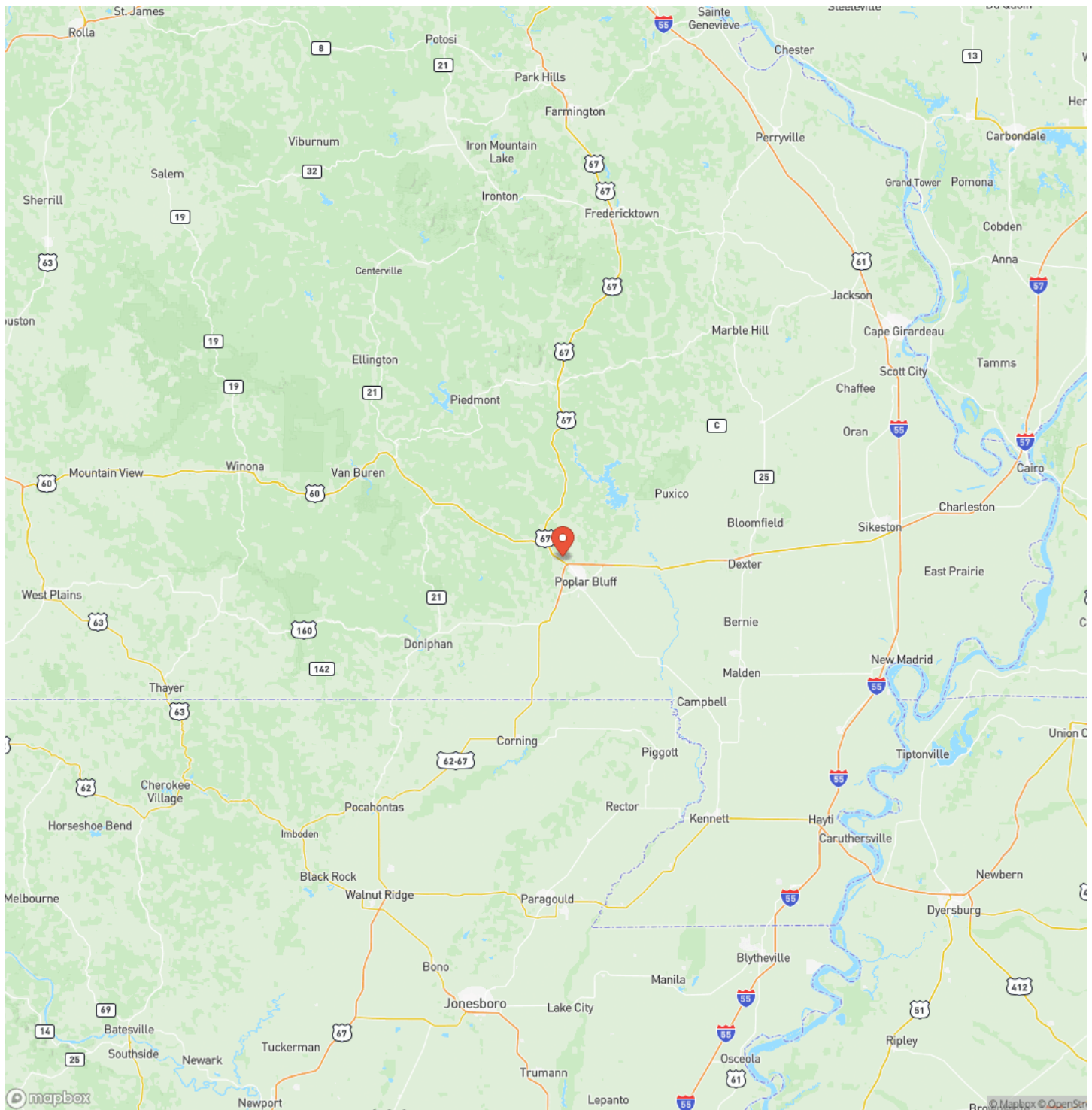


Locator Map



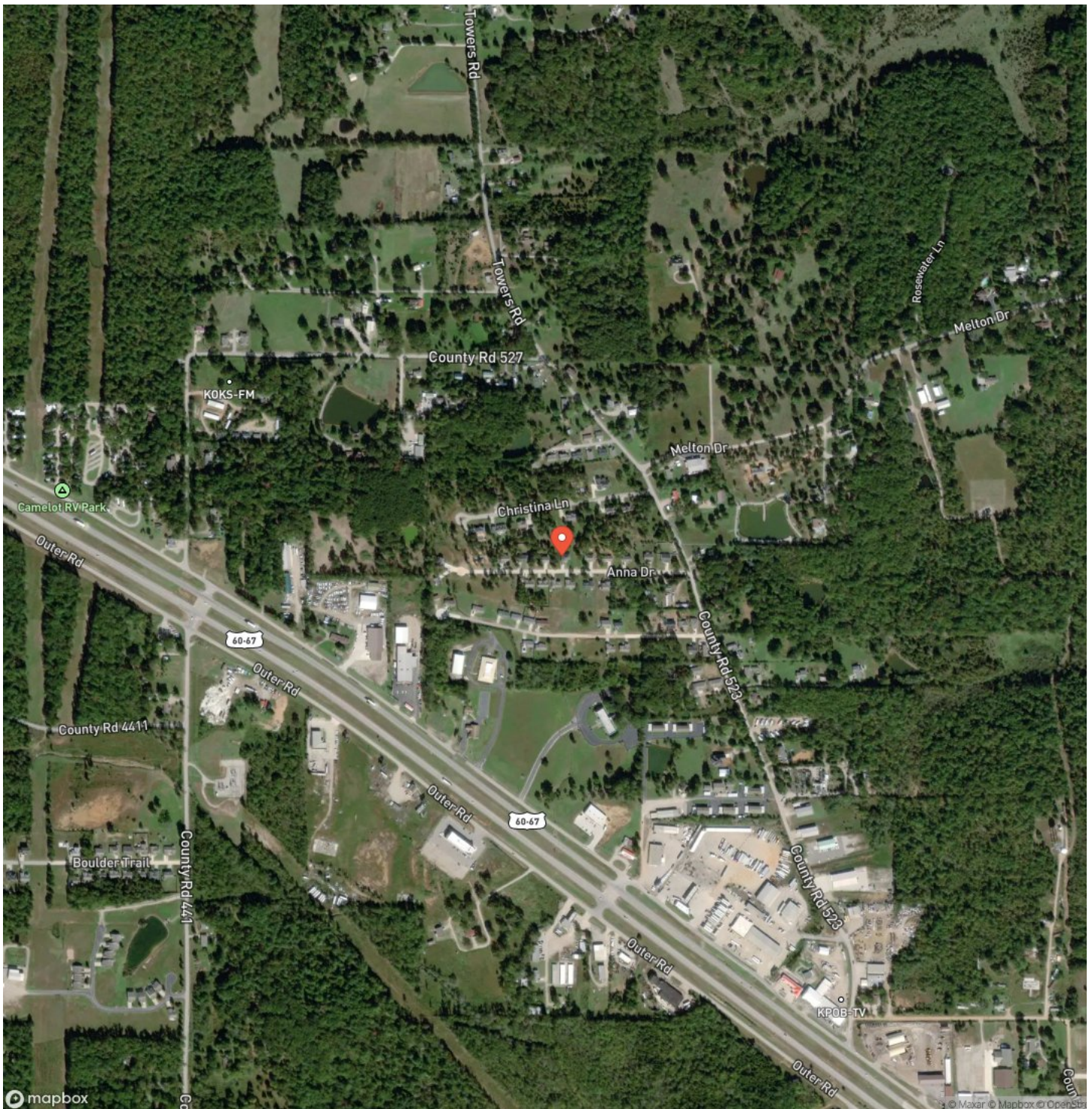
Gorgeous 4 bed, 3 bath with Full Basement in Butler County, MO
Poplar Bluff, MO / Butler County

Locator Map



Gorgeous 4 bed, 3 bath with Full Basement in Butler County, MO
Poplar Bluff, MO / Butler County

Satellite Map



**Gorgeous 4 bed, 3 bath with Full Basement in Butler County, MO
Poplar Bluff, MO / Butler County**

LISTING REPRESENTATIVE

For more information contact:



Representative

Zach Bacon

Mobile

(573) 421-8495

Office

(573) 712-2252

Email

zbacon@mossyoakproperties.com

Address

947 N. Westwood Blvd.

City / State / Zip

Poplar Bluff, MO 63901

NOTES

[illegible]

MORE INFO ONLINE:

MossyOakProperties.com

[illegible]

DISCLAIMERS

Information in this brochure is provided solely for information purposes and does not constitute an offer to sell or advertise real estate outside the states in which broker or agent licensed. The information presented has been obtained from sources deemed to be reliable, but is not guaranteed or warranted by the agent, broker, or the sellers of these properties. This offering is subject to errors, omissions, prior sale, price change, correction or withdrawal from the market without notice. All references to age, square footage, income, expenses, acreage, carrying capacity, and land classification, etc. are approximate. Prospective buyers are chargeable with and expected to conduct their own independent investigation of the information and the property and to rely only on those results. Sellers reserve the right to accept or reject any and all offers without liability to any buyer or cooperating broker.

Maps are provided for illustration purposes only, the accuracy is not warranted. Parcels on interactive maps are not adjusted to match aerial backgrounds. This information is for reference purposes only and is not a legal document. Data maps contain errors. The seller and seller's agent are making known to all potential buyers that there may be variations between the location of the existing fence lines and the legal description of the deeded property. Seller and seller's agent make no warranties with regard to the location of the fence lines in relationship to the deeded property lines, nor does the Seller make any warranties or representations with regard to the specific acreage contained within the fenced property lines. Seller is selling the property in an "as is" condition, which includes the location of the fences as they exist. Boundaries shown on the accompanying maps are approximate, based on county parcel data. The maps are not to scale. The accuracy of the maps is not guaranteed. Prospective buyers are encouraged to verify fence lines, deeded property lines and acreages using a licensed surveyor at their own expense.



Mossy Oak Properties Mozark Realty
947 N. Westwood Blvd.
Poplar Bluff, MO 63901
(573) 712-2252
MossyOakProperties.com

