

72 +/- acres with Cozy 2 Bed, 2 Bath Home For Sale in
Butler County, MO
393 Mike Lane
Poplar Bluff, MO 63901

\$389,900
72.920± Acres
Butler County



72 +/- acres with Cozy 2 Bed, 2 Bath Home For Sale in Butler County, MO
Poplar Bluff, MO / Butler County

SUMMARY

Address

393 Mike Lane

City, State Zip

Poplar Bluff, MO 63901

County

Butler County

Type

Recreational Land, Farms, Hunting Land, Residential Property

Latitude / Longitude

36.744386 / -90.5710647

Dwelling Square Feet

1666

Bedrooms / Bathrooms

2 / 2

Acreage

72.920

Price

\$389,900

Property Website

<https://www.mossyoakproperties.com/property/72-acres-with-cozy-2-bed-2-bath-home-for-sale-in-butler-county-mo-butler-missouri/34850/>



MORE INFO ONLINE:

MossyOakProperties.com

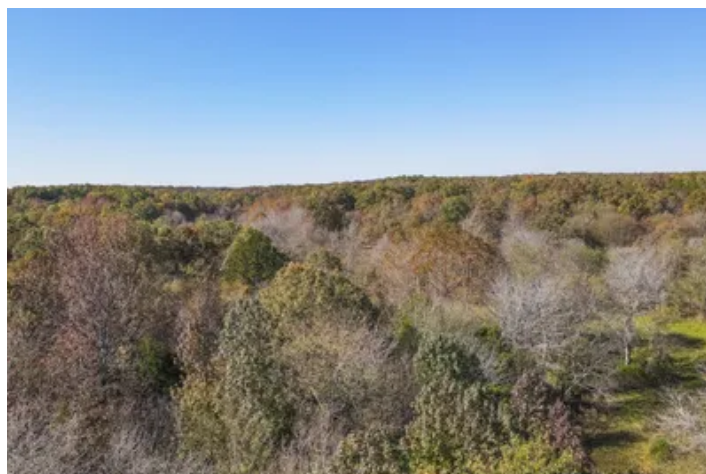
72 +/- acres with Cozy 2 Bed, 2 Bath Home For Sale in Butler County, MO
Poplar Bluff, MO / Butler County

PROPERTY DESCRIPTION

Over 70 acres right outside of town that has been completely cleaned up and could be utilized as a cattle farm or recreation property. This property also possibly has some profitable timber and as you can see in the photos has great potential for hunting with several signs of wild game. Property also offers two stocked ponds and 2 bed/2bath home with beautiful flooring, and an amazing walk in tile shower. There has also been a 40x64 concrete pad poured to be utilized to build a beautiful shop as well as tons of dirt and gravel work. This farm is secluded but only a short distance from Poplar Bluff.

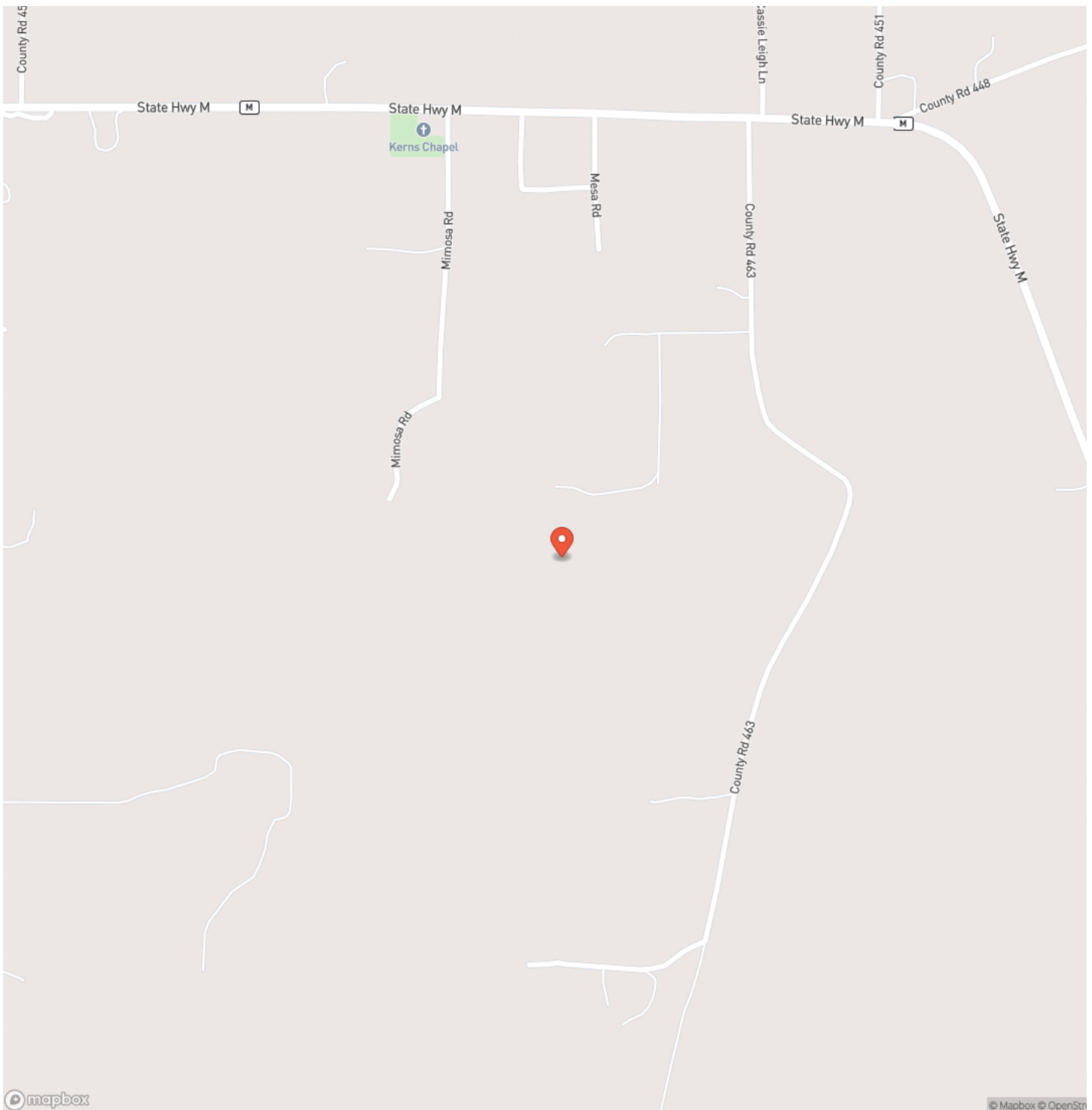


72 +/- acres with Cozy 2 Bed, 2 Bath Home For Sale in Butler County, MO
Poplar Bluff, MO / Butler County



72 +/- acres with Cozy 2 Bed, 2 Bath Home For Sale in Butler County, MO
Poplar Bluff, MO / Butler County

Locator Map

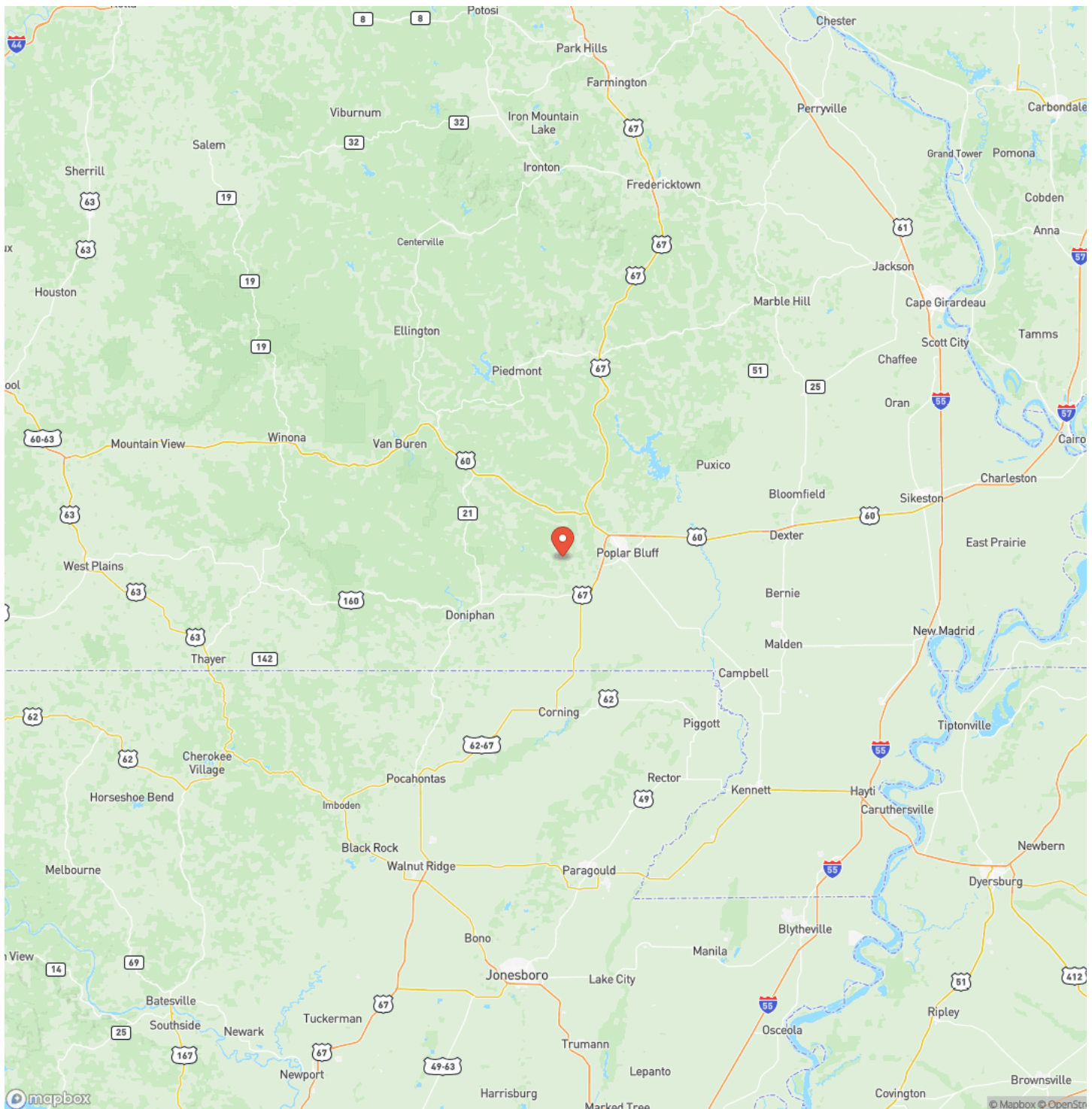


MORE INFO ONLINE:

MossyOakProperties.com

72 +/- acres with Cozy 2 Bed, 2 Bath Home For Sale in Butler County, MO
Poplar Bluff, MO / Butler County

Locator Map

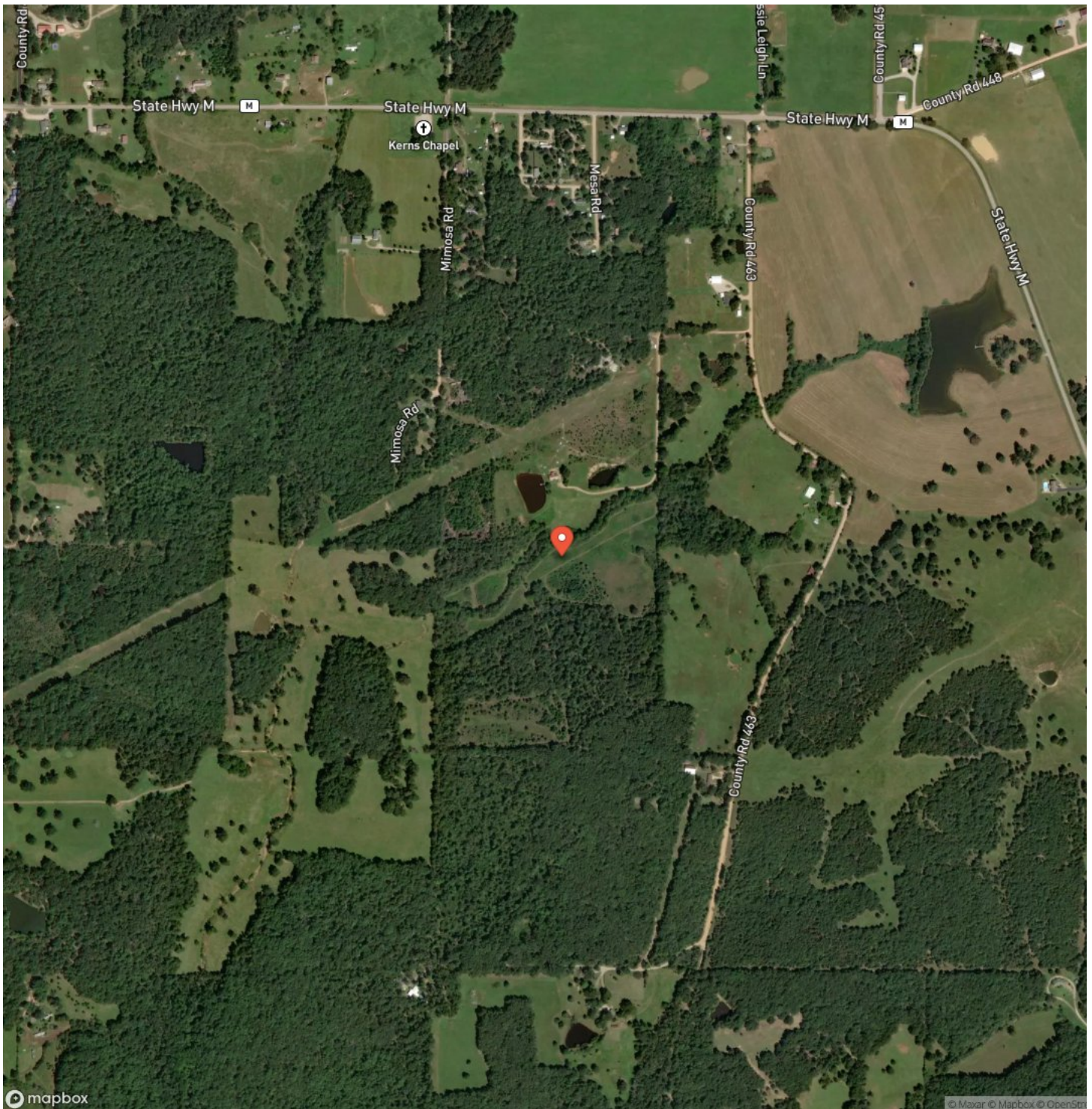


MORE INFO ONLINE:

MossyOakProperties.com

72 +/- acres with Cozy 2 Bed, 2 Bath Home For Sale in Butler County, MO
Poplar Bluff, MO / Butler County

Satellite Map



**72 +/- acres with Cozy 2 Bed, 2 Bath Home For Sale in Butler County, MO
Poplar Bluff, MO / Butler County**

LISTING REPRESENTATIVE

For more information contact:



Representative

Zach Bacon

Mobile

(573) 421-8495

Office

(573) 712-2252

Email

zbacon@mossyoakproperties.com

Address

947 N. Westwood Blvd.

City / State / Zip

Poplar Bluff, MO 63901

NOTES



MORE INFO ONLINE:

MossyOakProperties.com

This image shows a blank sheet of white paper with horizontal ruling lines. The lines are evenly spaced and run across the width of the page. There are no margins, text, or other markings on the paper.



DISCLAIMERS

Information in this brochure is provided solely for information purposes and does not constitute an offer to sell or advertise real estate outside the states in which broker or agent licensed. The information presented has been obtained from sources deemed to be reliable, but is not guaranteed or warranted by the agent, broker, or the sellers of these properties. This offering is subject to errors, omissions, prior sale, price change, correction or withdrawal from the market without notice. All references to age, square footage, income, expenses, acreage, carrying capacity, and land classification, etc. are approximate. Prospective buyers are chargeable with and expected to conduct their own independent investigation of the information and the property and to rely only on those results. Sellers reserve the right to accept or reject any and all offers without liability to any buyer or cooperating broker.

Maps are provided for illustration purposes only, the accuracy is not warranted. Parcels on interactive maps are not adjusted to match aerial backgrounds. This information is for reference purposes only and is not a legal document. Data maps contain errors. The seller and seller's agent are making known to all potential buyers that there may be variations between the location of the existing fence lines and the legal description of the deeded property. Seller and seller's agent make no warranties with regard to the location of the fence lines in relationship to the deeded property lines, nor does the Seller make any warranties or representations with regard to the specific acreage contained within the fenced property lines. Seller is selling the property in an "as is" condition, which includes the location of the fences as they exist. Boundaries shown on the accompanying maps are approximate, based on county parcel data. The maps are not to scale. The accuracy of the maps is not guaranteed. Prospective buyers are encouraged to verify fence lines, deeded property lines and acreages using a licensed surveyor at their own expense.



Mossy Oak Properties Mozark Realty
947 N. Westwood Blvd.
Poplar Bluff, MO 63901
(573) 712-2252
MossyOakProperties.com

